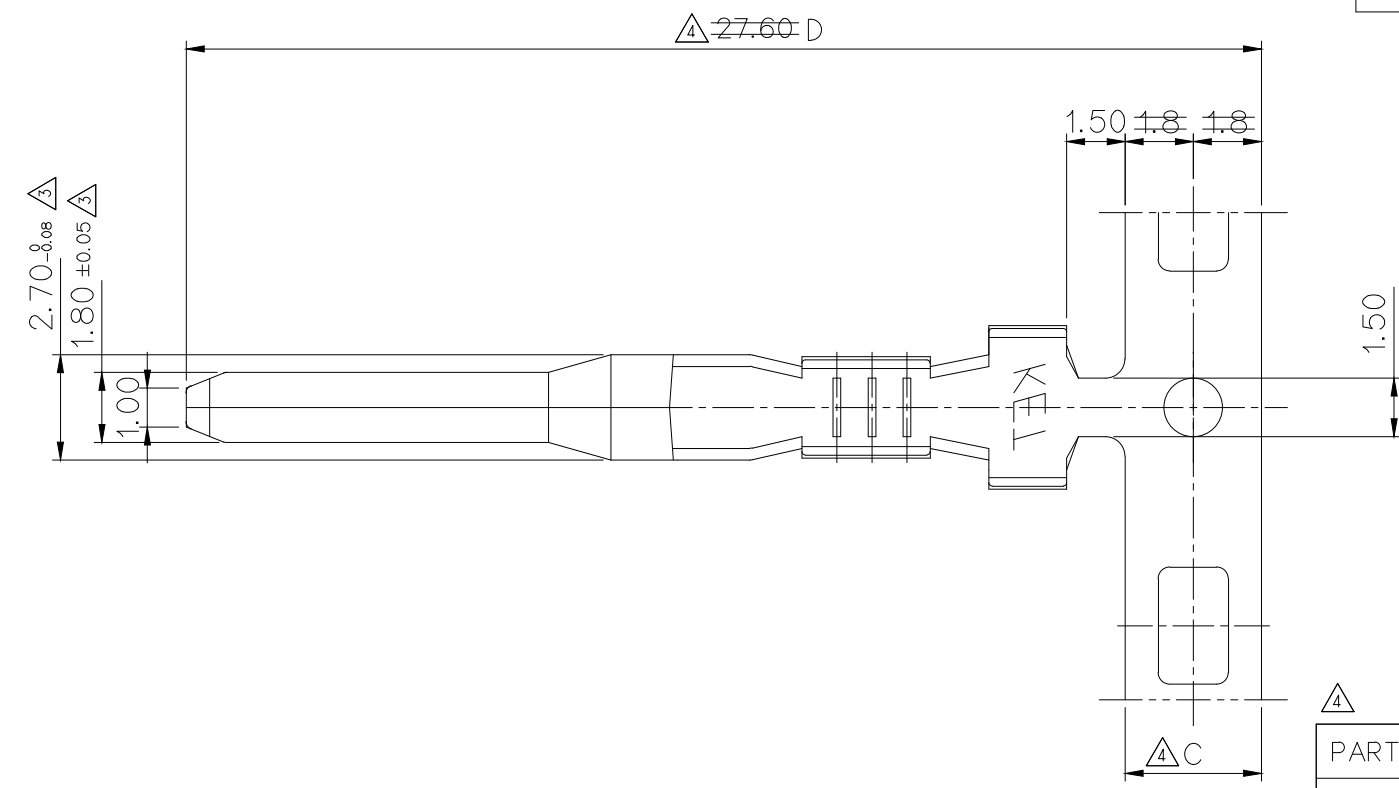
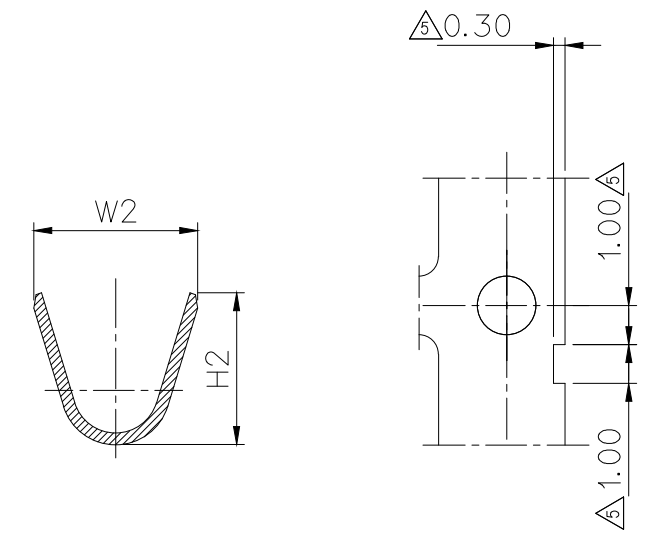


GENERAL TOLERANCE (TERMINAL)						USED ON
10 MAX	20 MAX	45 MAX	45 VR	ANGLE	ECCENT	
±0.2	±0.25	±0.3	±0.5	±30'	0.1	



PART NO.	C	D
ST740484	3.00	27.10
ST740485	3.50	27.60



ST740484

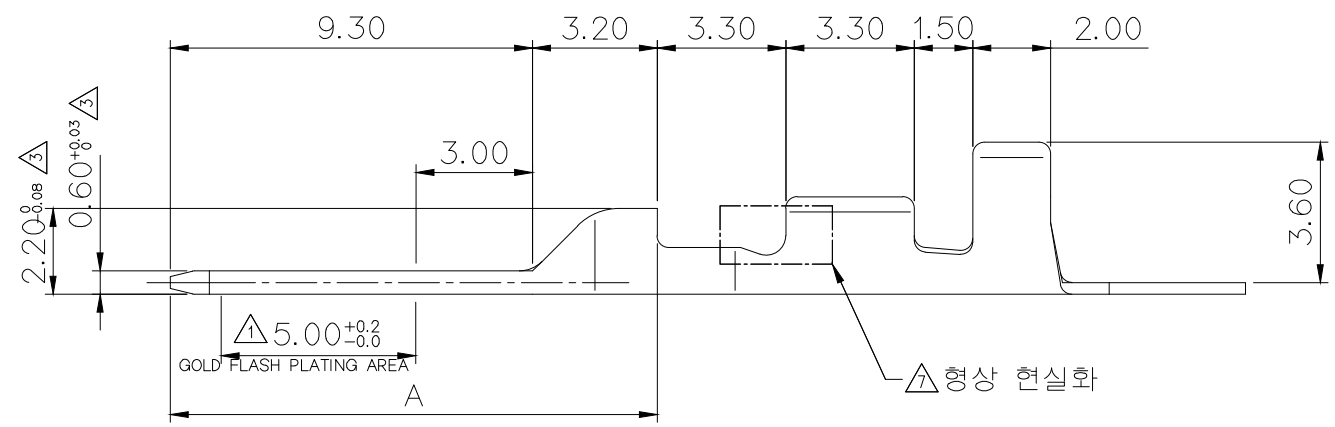
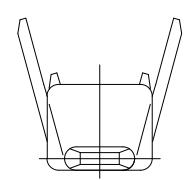


TABLE 1

PL NO	BARREL SIZE		WIRE RANGE AVS (mm ²)	WIRE BARREL		INSULATION BARREL	
	PITCH			W1	H1	W2	H2
ST740484	S	△ 9.70 11.20	0.3 ~ 0.85	2.6	2.5	4.2	3.9
ST740485	M	11.20	1.25 ~ *2	3.6	3.2	4.3	△ 4.6 4.4

TABLE 2

NO	MAT'L	FINISH	THICK'
-3	BRASS	PRE-TIN	0.3t
-G	BRASS	AU	0.3t

NOTE

- 1) AU 도금 사양은 △의 규칙을 만족하며, MAX, 도금 범위는 A부 이하 일것.
- 2) AU 도금 사양은 KET AU 도금 SPEC에 준함.
- △ 3) 제품내 함유된 6대 유해물질 (납, 수은, 카드뮴, 6가 크롬, PBBs, PBDEs)은 EU ELV 지침 및 RoHS 지침을 준수하며 최대 허용 농도를 초과해서는 안된다.



CUSTOMER DRAWING

△5	실계사양변경(S070257) 근거 재작성	CDH	-	-	'07.11.19	MATERIAL	SEE TABLE		KOREA ELECTRIC TERMINAL CO., LTD.	
△4	PITCH 사양 변경	YSW	-	-	'07.09.17	FINISH	SEE TABLE			
△3	DIM'S 추가	BIN	KO	-	'00.11.13	WIRE RANGE	CLASS			
△2	BARREL 치수 변경(1곳)	-	-	-	'95.06.28	INSULATION	TYPE	7114-1470		
△1	가공부 금도금 범위 추가	-	-	-	'91.08.06					
LTR	REVISION RECORD	DR.	CHK.	APP.	DATE	TOLERANCE EXCEPT AS NOTED	SCALE	PART NO.		
DR.	1.21.92	CHK.				±0.0B10.2	5/1	ST740484		
CHK.	H:\S070257_04\step-k20	APP.								
							PART NAME			SDL TAB TERM'(S) (M)

△	ECO-1806-153 근거 도면 변경	SSW	LSY	SUK	'18.06.12
△	ECO-1707-346 근거 도면 변경	PJE	NKT	CJH	'17.07.20