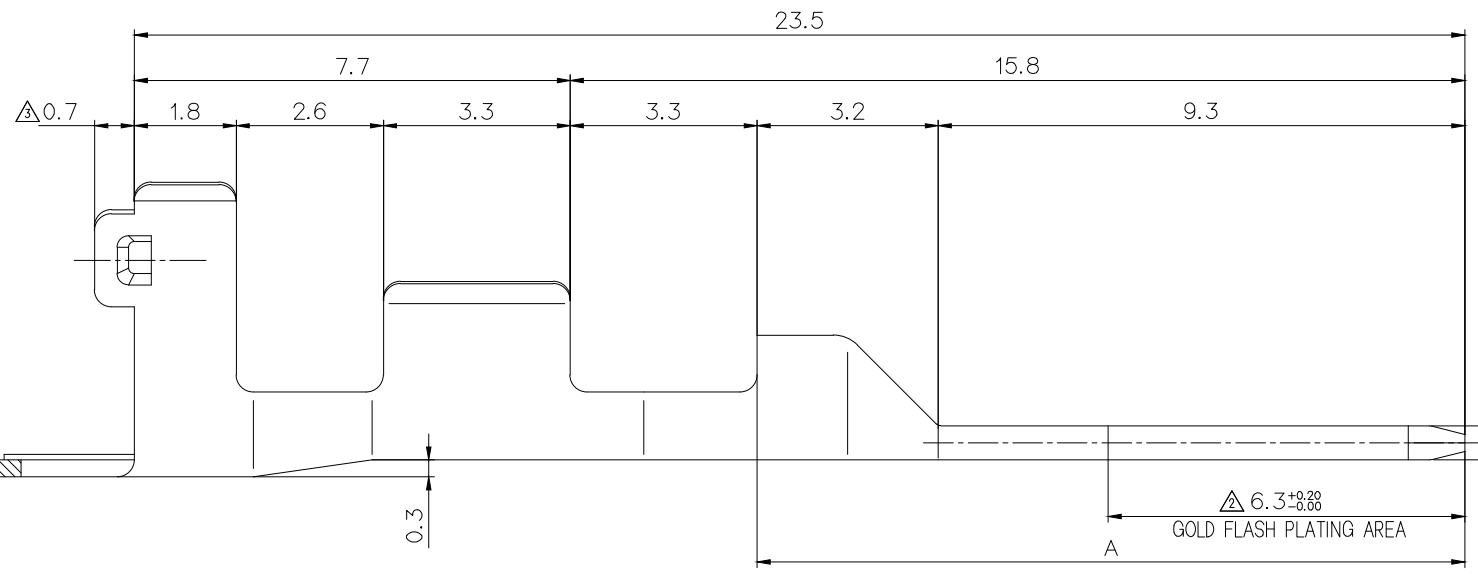
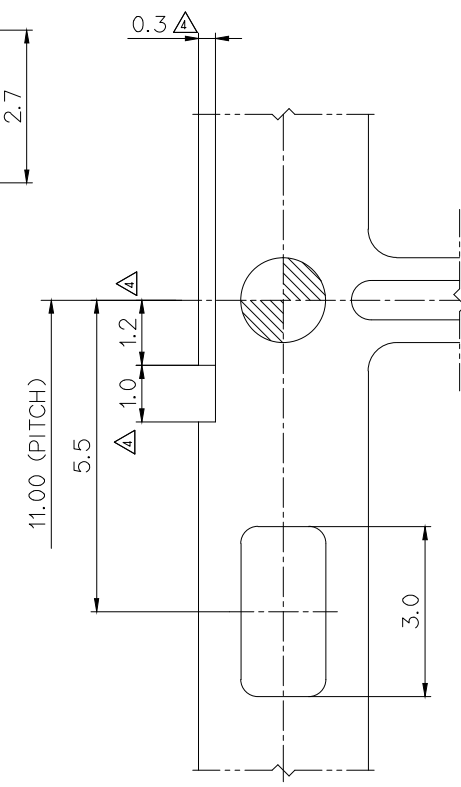
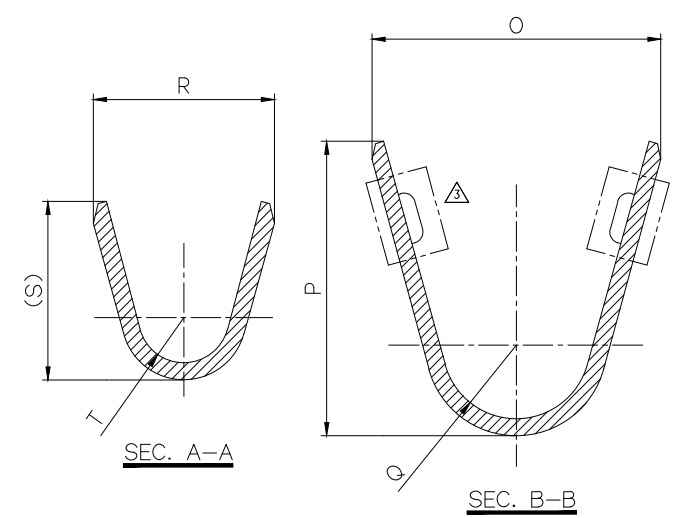
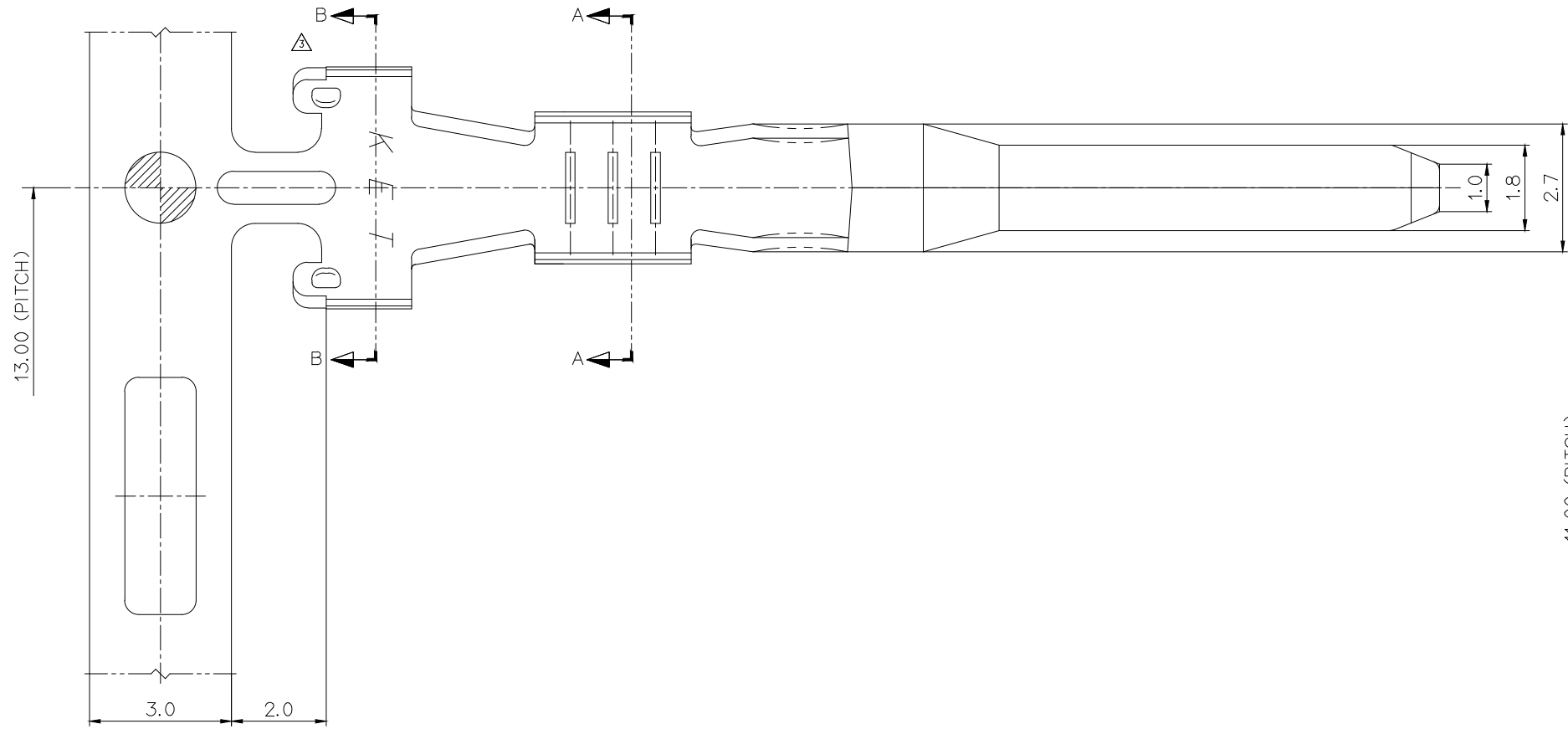


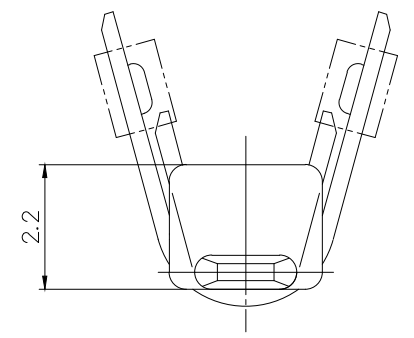
NO	PART No.	PITCH	PART NAME	FINISH	DIMENSION					△적용 WIRE		△적용 WIRE SEAL	
					R	S	T	O	P	Q	PART NO.	INSULATION RANGE	
1	ST741366	11.0	SWP MALE TM'L(S)	-3 PRE-TIN	2.1	2.2	R0.4	4.5	4.2	R1.3	AVSS 0.3	MG680448	△1.25 ~ 1.5
				-G GOLD (AU)	2.1	2.2	R0.4	4.5	4.2	R1.3	AVSS 0.3	MG680448	△1.25 ~ 1.5
2	ST740482	11.0	SWP MALE TM'L(S)	-3 PRE-TIN	2.6	2.5	R0.6	4.5	4.2	R1.3	△FLR2X-B 0.35, 0.5 △CIWUS 0.35, 0.5 AVS 0.3, 0.5, △FLR2X-B 0.75, △CIWUS 0.75 AVXF 0.75f, AVS 0.85, AVX 0.85	MG680448 MG680449 MG680450	△1.25 ~ 1.5 △1.4 ~ 2.0 △1.9 ~ 2.2
				-G GOLD (AU)	2.6	2.5	R0.6	4.5	4.2	R1.3	△FLR2X-B 0.35, 0.5 △CIWUS 0.35, 0.5 AVS 0.3, 0.5, △FLR2X-B 0.75, △CIWUS 0.75 AVXF 0.75f, AVS 0.85, AVX 0.85	MG680448 MG680449 MG680450	△1.25 ~ 1.5 △1.4 ~ 2.0 △1.9 ~ 2.2
3	ST740483	13.0	SWP MALE TM'L(M)	-3 PRE-TIN	3.6	3.2	R0.8	5.1	5.2	R1.3	△CIWUS 1.0 △FLR2X-B 1.0, △AVSSXF 1.0, 1.5 AV 1.25, AVS 1.25, AEX1.25, AVX 1.25, AVSS 2.0 △FLR2X-B 1.5, 2.0	MG680449 MG680450 MG680451	△1.4 ~ 2.0 △1.9 ~ 2.2 △2.3 ~ 2.7
				-G GOLD (AU)	3.6	3.2	R0.8	5.1	5.2	R1.3	△CIWUS 1.0 △FLR2X-B 1.0, △AVSSXF 1.0, 1.5 AV 1.25, AVS 1.25, AEX1.25, AVX 1.25, AVSS 2.0 △FLR2X-B 1.5, 2.0	MG680449 MG680450 MG680451	△1.4 ~ 2.0 △1.9 ~ 2.2 △2.3 ~ 2.7

PART No.	FINISH
△ST740482-3 △ST740483-3 △ST741366-3	Undercoat : Cu 0.5 - 1.0 μm Pre-Tin : 0.8 - 1.5 μm
ST740482-G ST740483-G △ST741366-G	△Undercoat : Ni 1.0 - 2.0 μm Au : Min 0.38 μm (Gold Plating on marking part) Gold content rate : 99.7-99.99%

USED ON



△△ ST740482, ST741366 전용



주 기

- △ 1. 기능상 유해한 BURR, CRACK 및 변형 등 결함이 없을 것.
- △ 2. Au도금사양은 △의 규격을 만족하며 최대 도금범위는 A부 이내일 것.
- △ 3. Au 도금 사양은 KET Au도금 SPEC에 준함.
- △ 4. 재품내 함유된 6대 유해물질 (납, 수은, 카드뮴, 6가크롬, PBBs, PBDEs)은 EU ELV 지침 및 RoHS 법규에서 지정한 최대 허용 농도를 초과해서는 안된다.

NOTE

- △ 1. MUST BE FREE OF IMPERFECTION SUCH AS BURR, CRACK, DEFORMATION THAT AFFECT FUNCTION.
- △ 2. Au PLATING SPEC SHOULD BE SPEC △, MAX 'A' AREA.
- △ 3. Au PLATING SPEC SHOULD BE BASE ON KET Au PLATING SPEC.
- △ 4. 6 HAZARDOUS SUBSTANCES IN PARTS (LEAD, MERCURY, CADMIUM, HEXAVALENT CHROMIUM, PBBs, PBDEs) SHOULD NOT EXCEED THE MAXIMUM PERMISSIBLE CONCENTRATION PRESCRIBED UNDER EU ELV DIRECTIVE & RoHS REGULATION.

APPROVED
2021-10-20
KOREA ELECTRIC
TERMINAL CO., LTD.
Korea Electric Terminal Co., Ltd.

ISSUE MARK

ECO-1502-286	근거 도면 수정	LKS	CKY	CWK	15.03.03	MATERIAL	BRASS		KIET KOREA ELECTRIC TERMINAL CO., LTD.	
ECO-2102-035	근거 도면 수정	LJH	HJE	CKY	21.02.09	FINISH	SEE TABLE			
ECO-1905-214	근거 도면 수정	LJH	HJE	CKY	19.05.16	WIRE RANGE	SEE TABLE			
ECO-705-355	근거 도면 수정	SSW	CMS	LJE	17.05.25	INSULATION	SEE TABLE			
ECO-1506-248	근거 도면 수정	PJH	CWK	BIN	15.06.12	TOLERANCE EXCEPT AS NOTED	±0.2	SCALE	10/1	
LTR REVISION RECORD						DR.	CHK.	APP.	DATE	PART NAME
LTR REVISION RECORD						DR.	CHK.	APP.	DATE	PART NAME

△SEE TABLE

SWP TAB TERMINAL (S), (M)