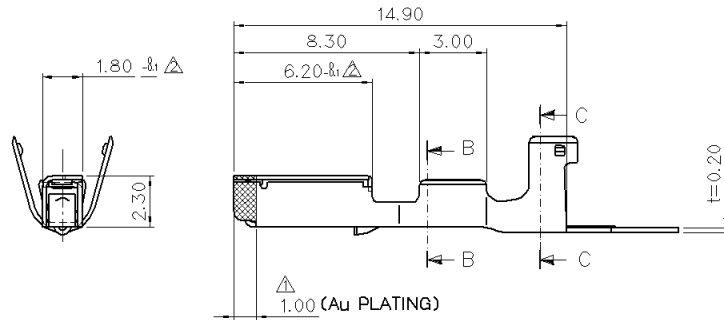
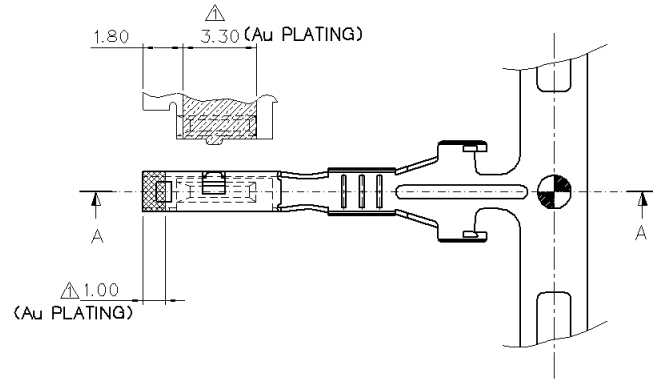


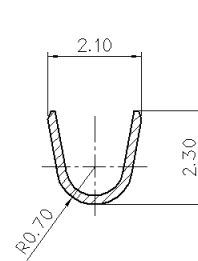
PART NO. ST730622
ST731103

CUSTOMER DRAWING

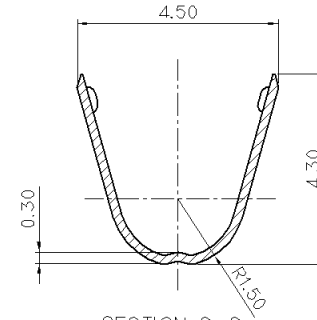


품번	처리
ST730622 ST731103	- Cu 하지도금 - 광택 석도금.
ST730622-G	- Ni 하지도금 - 금도금 두께 : 0.38 μ m 이상
ST730622GE	- Ni 하지도금 - 금도금 두께 : 0.8 μ m 이상
ST730622-S	- Ni 하지도금 : 1.0 - 1.5 μ m - 은도금 두께 : 1.0 μ m 이상 - 은 함유율 : 99.70 - 99.90%

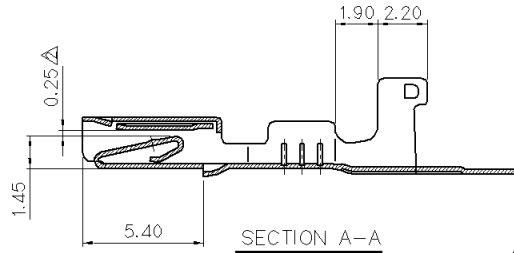
GENERAL TOLERANCE (TERMINAL)					USED ON
10MAX	20MAX	45MAX	ANGLE	ECCENT	
±0.20	±0.25	±0.30	±30'	0.10	



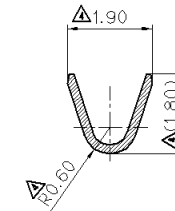
SECTION B-B
(S= 10/1)



SECTION C-C
(S= 10/1)



SECTION A-A



SECTION B-B (ST731103)
(S= 10/1)

NOTE

- 제품기능상 유해한 BURR, 변형 및 CRACK등이 없을것.
- 적용전선:
 - ST730622 : AVS(CAVS) 0.3~0.5mm², CAVS 0.85mm²
 - ST731103 : CHFUS 0.22mm², AVSS 0.22mm²
- 적용제품 : SSD CONNECTOR SERIES.
- 제품내 함유된 6대 유해물질 (납,수은,카드뮴,6가크롬, PBBs,PBDEs)은 EU ELV 지침 및 RoHS 법규에서 지정한 최대 허용 농도를 초과해서는 안된다.

ISSUE MARK

△ 설계/생산/품질/기술/개발/제조/판매/서비스/지원/교육/인사/회계/물류/법률/경영/총무/기타	△ 설계/생산/품질/기술/개발/제조/판매/서비스/지원/교육/인사/회계/물류/법률/경영/총무/기타	09.02.24	MATERIAL COPPER ALLOY	KETA ENGINEERED	KOREA ELECTRIC TERMINAL CO., LTD.
△ 설계/생산/품질/기술/개발/제조/판매/서비스/지원/교육/인사/회계/물류/법률/경영/총무/기타	△ 설계/생산/품질/기술/개발/제조/판매/서비스/지원/교육/인사/회계/물류/법률/경영/총무/기타	08.03.07	FINISH PRE-TIN		
△ 설계/생산/품질/기술/개발/제조/판매/서비스/지원/교육/인사/회계/물류/법률/경영/총무/기타	△ 설계/생산/품질/기술/개발/제조/판매/서비스/지원/교육/인사/회계/물류/법률/경영/총무/기타	01.05.30	WIRE RANGE	CLASS	
△ 설계/생산/품질/기술/개발/제조/판매/서비스/지원/교육/인사/회계/물류/법률/경영/총무/기타	△ 설계/생산/품질/기술/개발/제조/판매/서비스/지원/교육/인사/회계/물류/법률/경영/총무/기타	'00.11.11	INSULATION	TYPE	
△ 설계/생산/품질/기술/개발/제조/판매/서비스/지원/교육/인사/회계/물류/법률/경영/총무/기타	△ 설계/생산/품질/기술/개발/제조/판매/서비스/지원/교육/인사/회계/물류/법률/경영/총무/기타	98.05.06	SCALE 5/1	PART NO. ST730622 ST731103 ST731188	
LTR	REVISION RECORD	DR. CHK. APP. DATE	TOLERANCE EXCEPT AS NOTED	PART NAME	
DR. JANG 98.01.08	CHK. 01.09	APP. 01.09	SEE TABLE	SSD FEMALE TERMINAL	

△ 설계/생산/품질/기술/개발/제조/판매/서비스/지원/교육/인사/회계/물류/법률/경영/총무/기타	△ 설계/생산/품질/기술/개발/제조/판매/서비스/지원/교육/인사/회계/물류/법률/경영/총무/기타	08.04.03	CHK.	APP.	01.09
---	---	----------	------	------	-------

DIMENSIONS IN MM