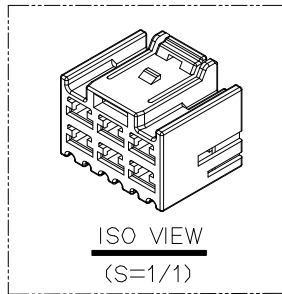
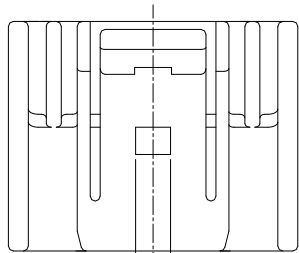


NO.	PART NAME	PART NO.	MATERIAL	COLOR
1	250 6F HOUSING	MG675870	SEE TABLE	SEE TABLE
2	250 6F SPACER	MG675871-3	PBT	YELLOW

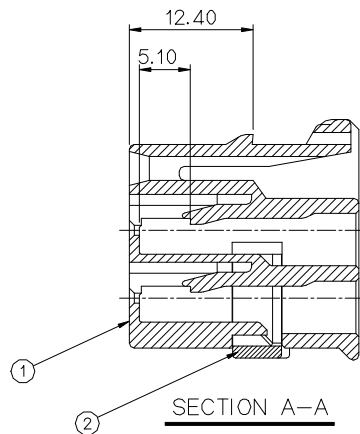
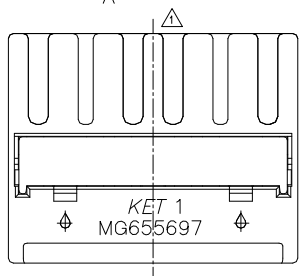
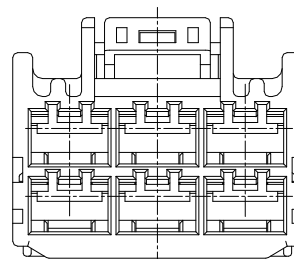
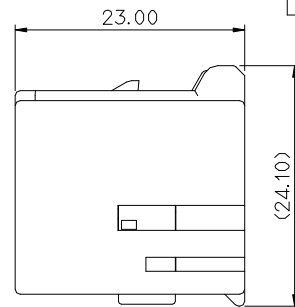
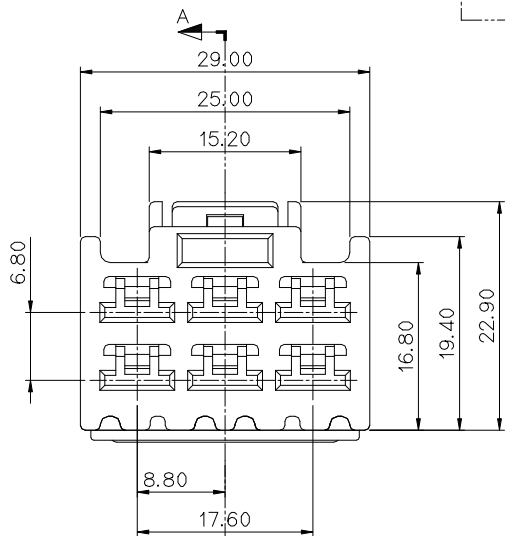
GENERAL TOLERANCE (HOUSING)							USED ON
10MAX	50MAX	100MAX	250MAX	250VR	ANGLE	ECCENT	
±0.2	±0.3	±0.55	±0.95	±1.4	±30'	0.1	



NO.	MATERIAL	COLOR
* 0	P B T	NATURAL
1		RED
2		BLUE
20		JADE
3		YELLOW
4		GRAY
40		DARK GRAY
41		LIGHT GRAY
5		BLACK
6		DARK GREEN
7		BROWN
8		LIGHT GREEN
9		MAGENTA
11		ORANGE

NOTE

- MUST BE FREE OF FLASH, SINK AND IMPERFECTION THAT AFFECT FUNCTION.
- APPLICABLE TERMINAL (250) : ST731209, 731210, 731211
- MATCHING HOUSING : MG645750
- THE MOLD DRAWING IN THE SAME WAY, SPACER IS NORMAL CONDITION MAINTENANCE AND SUPPLY WITH FIRST LOCKING.
- 6 HAZARDOUS SUBSTANCES IN PARTS (LEAD, MERCURY, CADMIUM, HEXAVALENT CHROMIUM, PBBs, PBDEs) SHALL NOT EXCEED THE MAXIMUM PERMISSIBLE CONCENTRATION PRESCRIBED UNDER EU ELV DIRECTIVE & RoHS REGULATION.



~S. ~!\_J

- ~!\_J^!^3P^\*!|5 ~R\_2~F\_~^3K| \$ BURR ^~5|7 WELDLINE^J^3P~\_5 ^,%!2^R^3C^!^%|3.
- ^~!^!^R^!P TERMINAL (250) : ST731209, 731210, 731211
- 상대 HOUSING : MG645750
- SPACER는 본 도면과 같이 1차 LOCK'G 상태로 유지, 공급할것.
- 제품내 함유된 6대 유해물질 (납,수은,카드뮴,6가크롬, PBBs,PBDEs)은 EU ELV 지침 및 RoHS 법규에서 지정한 최대 허용 농도를 초과해서는 안된다.

ISSUE MARK

MATERIAL		SEE TABLE		KOREA ELECTRIC				
FINISH		SEE TABLE		TERMINAL CO., LTD.				
WIRE RANGE				CLASS				
△ ECO-1307-152 외거 도면 제작성	HSR	HEM	CWK	13.07.18				
LTR	REVISION RECORD	DR.	CHK.	APP.	DATE	TOLERANCE	SCALE	TYPE
						KEEP AS-NOTED	2/1	250
DR.	JDR '12.09.26	CHK.			9/26	SEE TABLE		PART NO.
CHK.	김영호 9/27	APP.			9/27			MG655697
PART NAME		250 6F ASSY						