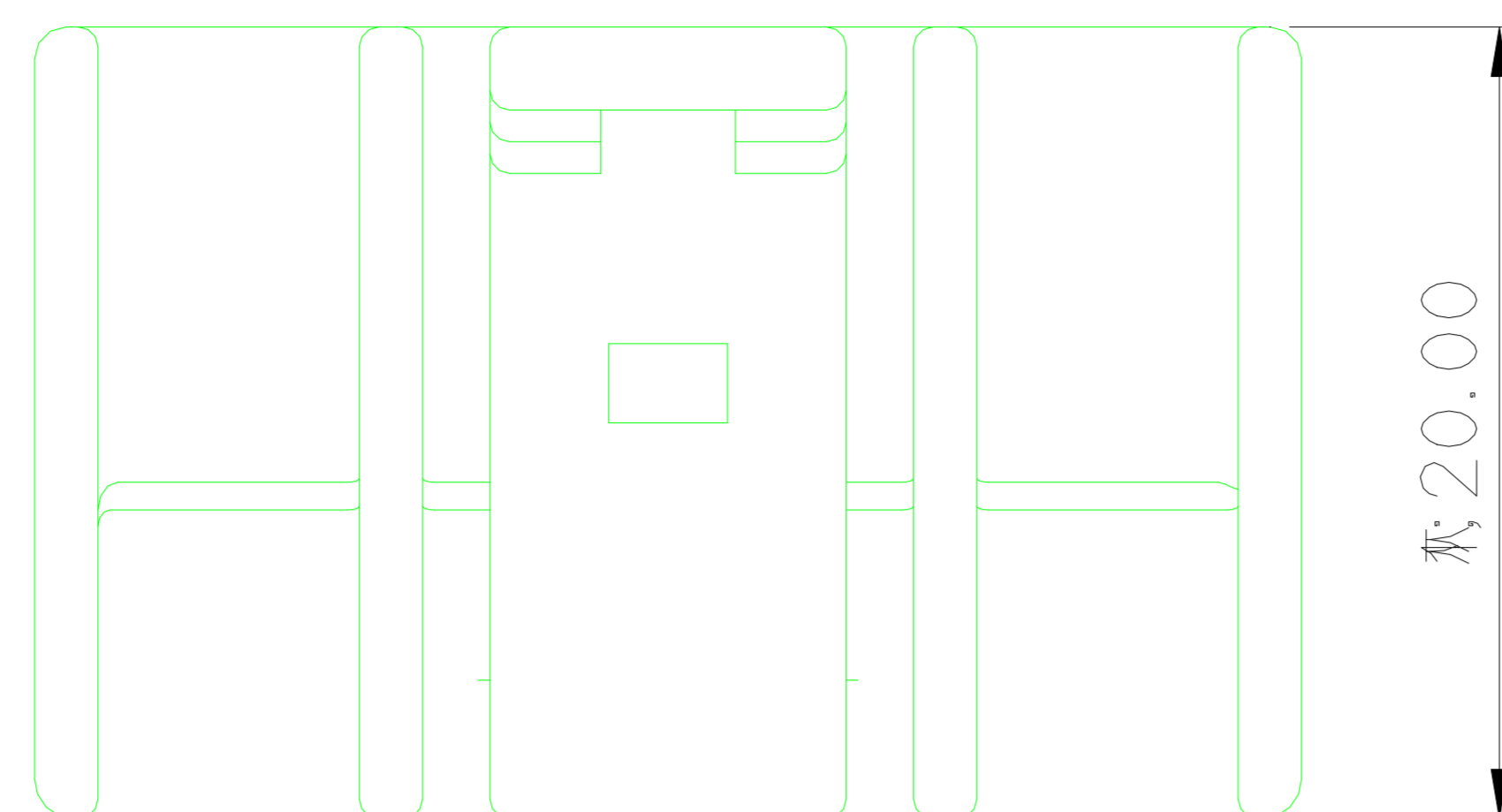
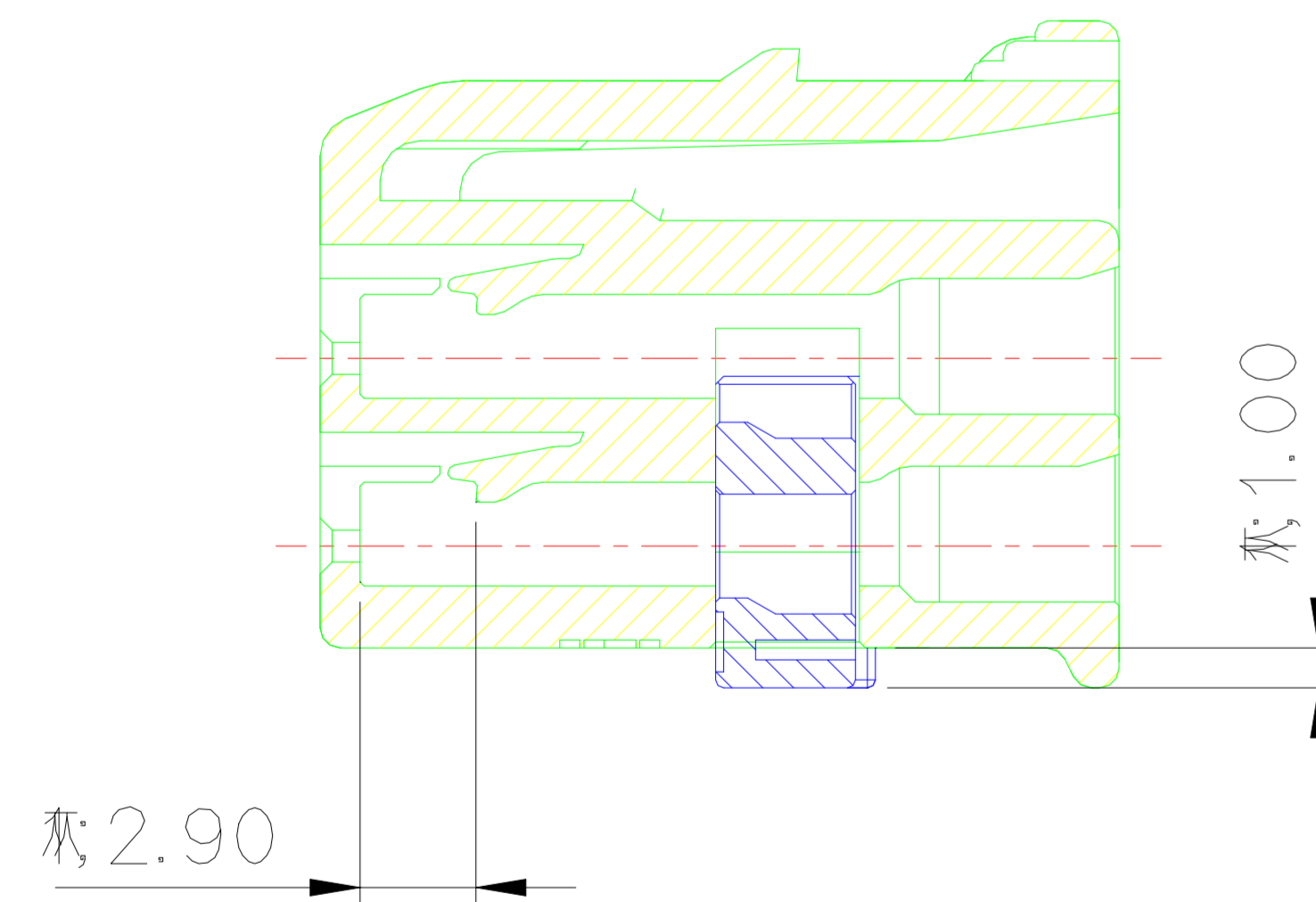
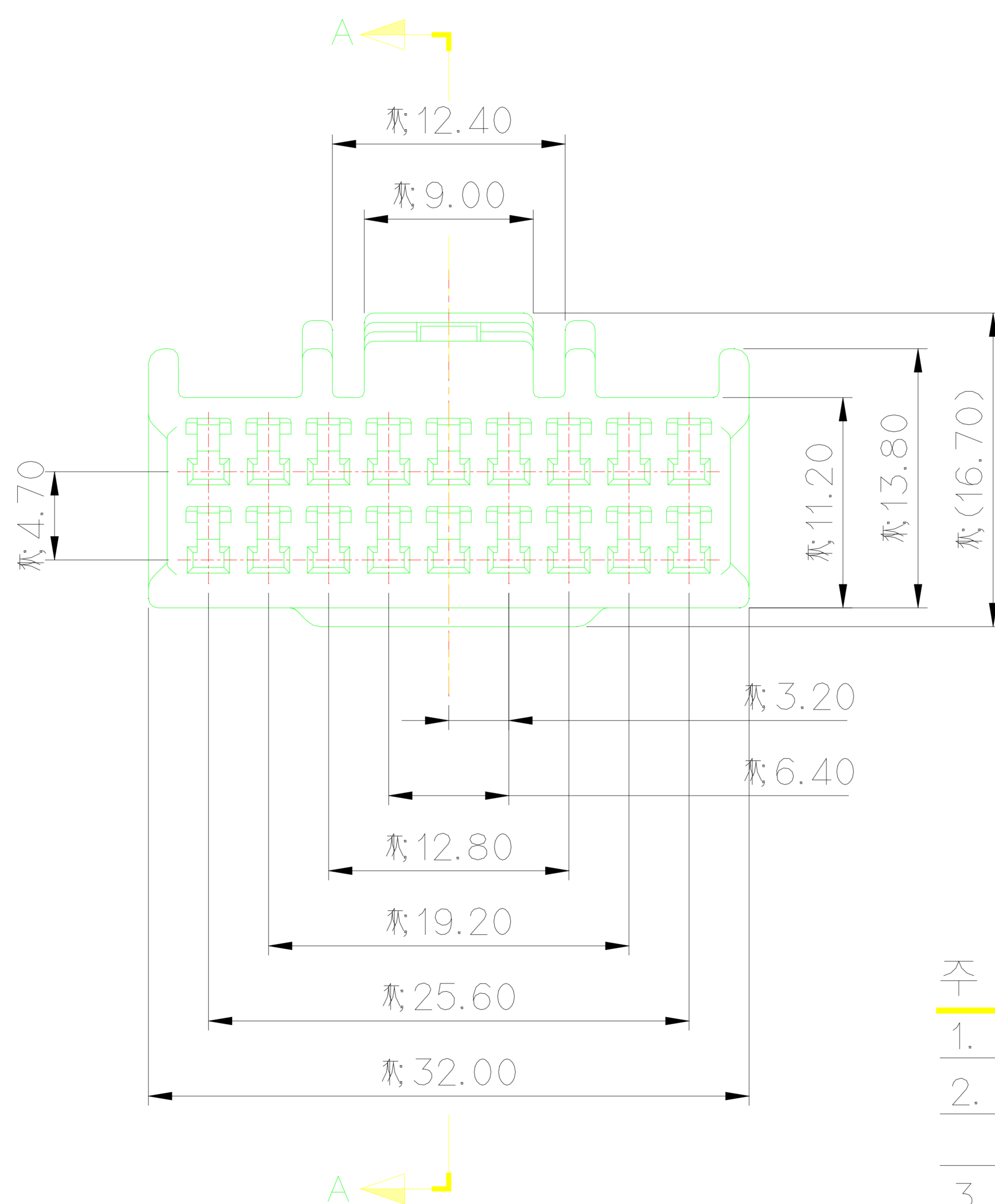


ISO VIEW



20.00



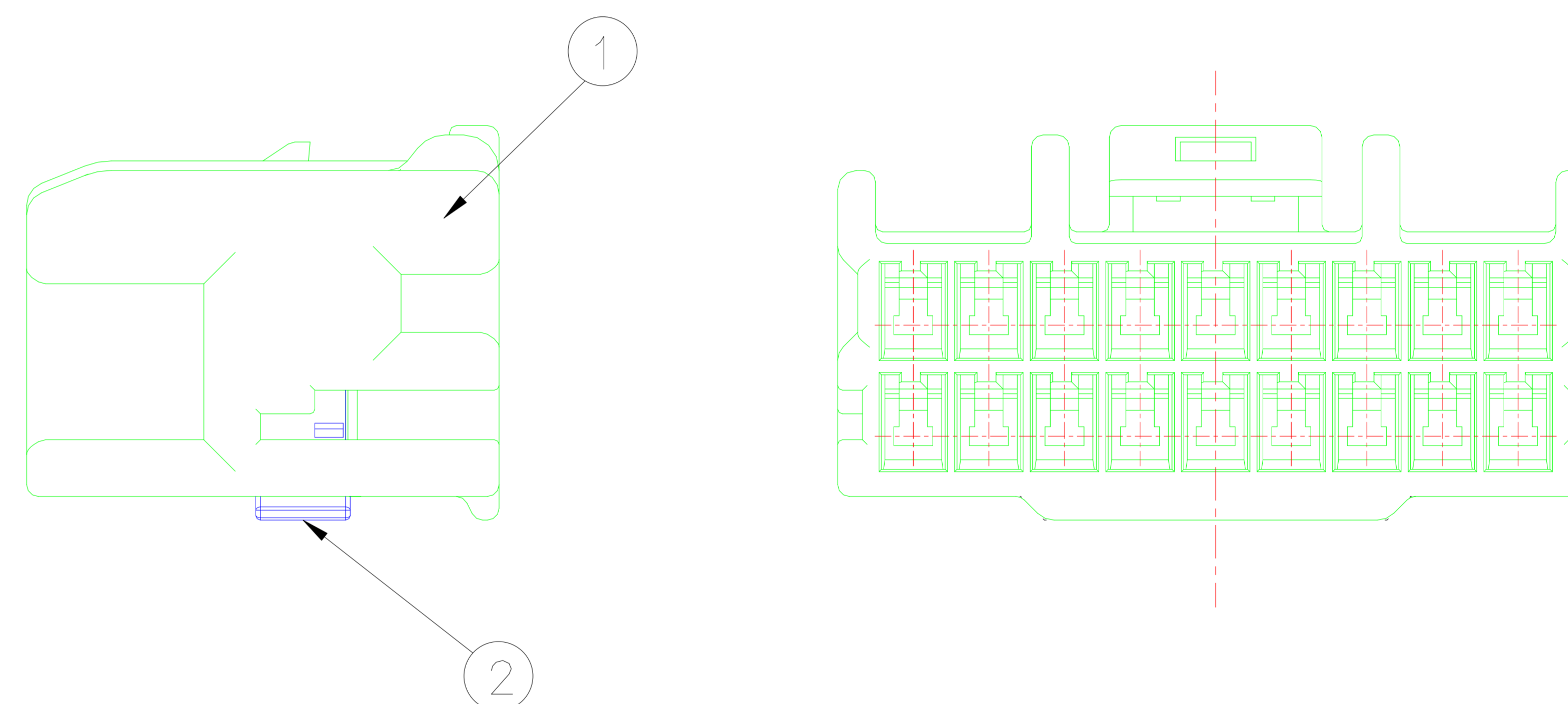
SECTION A-A

GENERAL TOLERANCE (HOUSING)

10MAX	50MAX	100MAX	250MAX	250VR	ANGLE	ECCENT	USED ON
±0.2	±0.3	±0.55	±0.95	±1.4	±30'	0.1	

NOTE

- MUST BE FREE OF FLASH, WELDLINE AND IMPERFECTION THAT AFFECT FUNCTION.
- APPLICABLE TERMINAL : ST731334-3, ST731335-3, ST731336-3
APPLICABLE CONNECTOR : MG645625
- 6 HAZARDOUS SUBSTANCES IN PARTS (LEAD, MERCURY, CADMIUM, HEXAVALENT CHROMIUM, PBBs, PBDEs) SHALL NOT EXCEED THE MAXIMUM PERMISSIBLE CONCENTRATION PRESCRIBED UNDER EU ELV DIRECTIVE & RoHS REGULATION.



주 기

- 기능상 유해한 BURR 및 WELDLINE 등이 없을 것.
- 적용 TERMINAL : ST731334-3, ST731335-3, ST731336-3
적용 CONNECTOR : MG645625
- 제품내 함유된 6대 유해물질 (납, 수은, 카드뮴, 6가크롬, PBBs, PBDEs)은 EU ELV 지침 및 RoHS 법규에서 지정한 최대 허용 농도를 초과해서는 안된다.

ISSUE MARK

NO.	PART NAME	PART NO.	MATERIAL	COLOR	QTY.
1	N060 18F HOUSING	MG675629	PBT	NATURAL	1
2	N060 18P SPACER	MG675627	PBT	L/GRAY	1

MATERIAL	SEE TABLE	KET KOREA ELECTRIC ENGINEERED TERMINAL CO., LTD.						
FINISH	SEE TABLE							
WIRE RANGE		CLASS 060						
INSULATION		TYPE						
LTR	REVISION RECORD	DR.	CHK.	APP.	DATE	TOLERANCE EXCEPT AS NOTED	SCALE 2/1	PART NO. MG655628
DR.	AJH. 2012.02.14	CHK.	KMH. 2012.02.16			SEE TABLE		
CHK.	CSH. 2012.02.16	APP.	HSH. 2012.02.16			PART NAME	N060 18F ASSY	