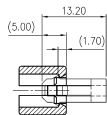
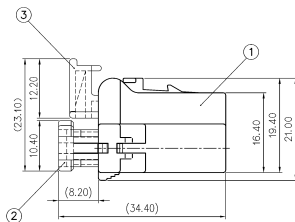
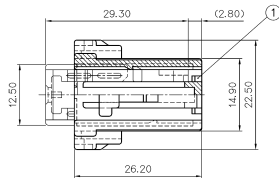


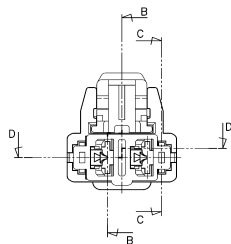
GENERAL TOLERANCE (HOUSING)							USED ON
1MAX	5MAX	10MAX	20MAX	45MAX	ANGLE	ECCENT	
±0.10	±0.15	±0.20	±0.25	±0.30	±30'	0.10	



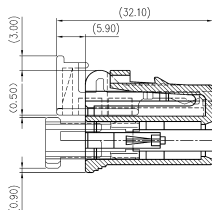
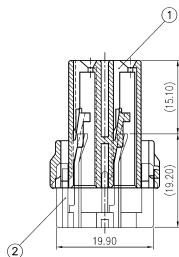
SECTION C-C



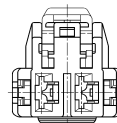
SECTION B-B



SECTION D-D



NO.	NAME	PART NO.	MATERIAL	REMARK
1	.250-II PLUG HOUSING 2P	MG670899	PBT	NATURAL
2	.250-II PLUG REAR HOLDER 2P	MG670900	PBT	YELLOW
3	.250-II PLUG LOCKING STOPPER	MG670827	PBT	RED



NOTES

1. 본 DWG에 HS'G,R/H,L/S의 1차 결함상세됨.
2. HS'G에 R/H결합시 원반결합(2차결합)이 되지않도록 함 것.
3. 칩용 TER'L의 ST 730267,268,269됨
4. ()안 치수는 참고치임.



ISSUE MARK

				(MATERIAL) SEE TABLE		AREA ELECTRIC
				(FINISH) SEE TABLE		TERMINAL CO. ETP
				(WIRE GAUGE)		
				(INSULATION)		
				(TYPE)		
LR	(REVISION RECORD)	DR	CHK	DATE	TOLERANCE	(SCALE)
DR	WON'95.04.06	DR		11.04	±0.2	2/1
CHK		APP		11.04	(MARK)	(DWG)

.250-II 2P PLUG HOUSING ASS'Y