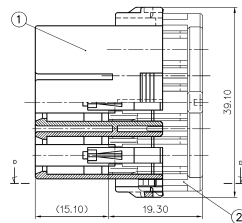
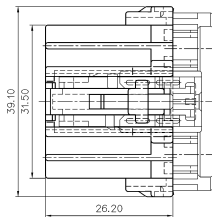
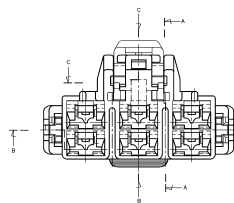
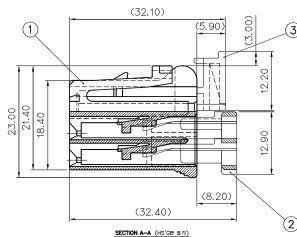


GENERAL TOLERANCE (HOUSING)						USED ON
1MAX	5MAX	10MAX	20MAX	45MAX	ANGLE	ECCENT
±0.10	±0.15	±0.20	±0.25	±0.30	±30°	0.10

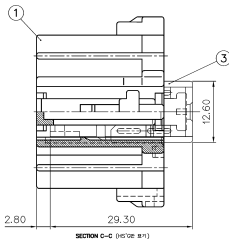
NO.	NAME	PART NO.	MATERIAL	REMARK
1	.250-Ⅱ PLUG HOUSING 6P	MG 670885	PBT GP-1000H	NATURAL
2	.250-Ⅱ PLUG REAR HOLDER 6P	MG 630886	PBT GP-1000H	YELLOW
3	.250-Ⅱ LOCKING STOPPER 6P	MG 670827	PBT GP-1000H	RED



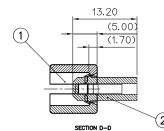
SECTION B-B (cut top 8.0)



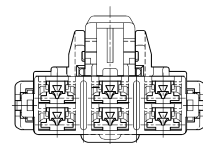
SECTION A-A (cut top 8.0)



SECTION C-C (cut top 8.0)



SECTION B-B



## NOTES

- 본 DWG은 HS'G,R/H,L/S의 1차 결합상태임.
- HS'G에 R/H결합시 완전결합(2차결합)이 되지않도록 함 것.
- 적용 TER'은 ST 730267,268,269임
- 적용 상머플은 YAZAKI P/NO. 7222-5545임
- ( )란 치수는 참고치임.

		(MATERIAL) SEE TABLE		KET		AIRSEA ELECTRIC	
		(FINISH) SEE TABLE		REVISION		TERMINAL EQ. LEP	
		(WIRE GAUGE)		(INSULATION)			
APP.	(REVISION RECORD)	DR.	CHK.	DATE	SCALE	QTY	
DR. WON.'95.3.13		DR. YOUNG	3.16		±0.2	2/1	MG650887
CHK.	3.16	APP.		(MARK)	.250-Ⅱ PLUG 6P HOUSING ASS'Y		



ISSUE MARK