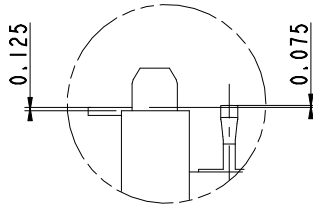
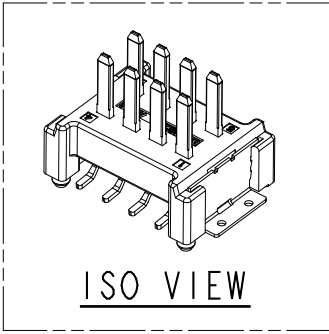
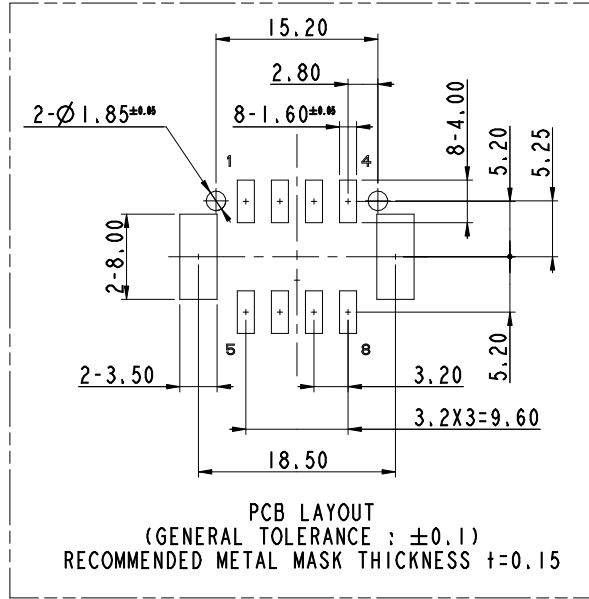
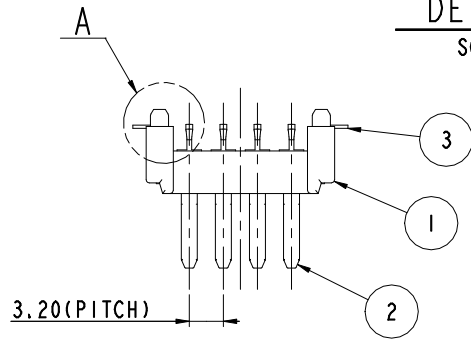


GENERAL TOLERANCE (TERMINAL)					GENERAL TOLERANCE (HOUSING)							USED ON
10 MAX	20 MAX	45 MAX	ANGLE	ECCENT	10 MAX	50 MAX	100 MAX	250 MAX	250 VR	ANGLE	ECCENT	
±0.2	±0.25	±0.3	±30'	0.1	±0.2	±0.3	±0.55	±0.95	±1.4	±30'	0.1	

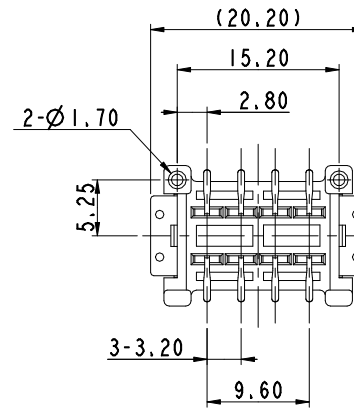
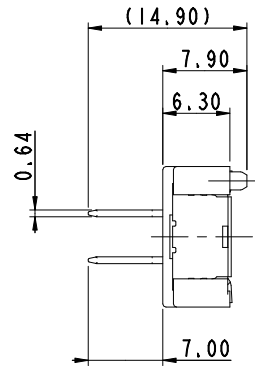
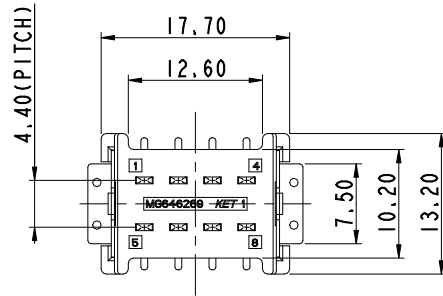


DETAIL A
SCALE 5/1



- 주기
- 가능상 유해한 BURR 및 WELDLINE 등이 없을 것
 - 적용 FEMALE HOUSING : MG655827
 - 단자 주석 도금 - TYPE A Sn(무광), (MS915-01)
Ni 하지 도금 + Sn(무광) + Reflow
 - 포장 사양 : EMBOSS TAPE REEL
 - 무연 솔더 적용 가능
 - 제품내 함유된 10대 유해물질 (납, 수은, 카드뮴, 6가크롬, PBBs, PBDEs, DEHP, DBP, BBP, DIBP)은 EU ELV 지침 및 RoHS 법규에서 지정한 최대 허용 농도를 초과해서는 안된다.

- NOTE
- MUST BE FREE OF FLASH, WELDLINE AND IMPERFECTION THAT AFFECT FUNCTION
 - APPLICABLE FEMALE HOUSING: MG655827
 - TERMINAL PLATING SPECIFICATION(Pb Free Solder) TIN-PLATED TERMINAL - TYPE A Sn(MATT), (MS915-01) Ni-PLATED UNDER + Sn(MATT) + Reflow
 - PACKAGING TYPE ; EMBOSS TAPE REEL
 - AVAILABLE FOR PB FREE SOLDER
 - 10 HAZARDOUS SUBSTANCES IN PARTS (LEAD, MERCURY, CADMIUM, HEXAVALENT CHROMIUM, PBBs, PBDEs, DEHP, DBP, BBP, DIBP) SHALL NOT EXCEED THE MAXIMUM PERMISSIBLE CONCENTRATION PRESCRIBED UNDER EU ELV DIRECTIVE & RoHS REGULATION.



NO.	MATERIAL	COLOR
0	PPS-GF40	NATURAL
1		RED
2		BLUE
20		JADE
3		YELLOW
4		GRAY
40		DARK GRAY
41		LIGHT GRAY
* 5		BLACK
6		DARK GREEN
7		BROWN
8	LIGHT GREEN	
9	MAGENTA	
11	ORANGE	

ISSUE MARK	
------------	--

NO	PART NAME	PART NO	MATERIAL	FINISH	QTY
1	060 8M SMD PINBLOCK	MG677335-5	SEE TABLE	SEE TABLE	1
2	060 SMD MALE TERMINAL(S)	ST792611-2	BRASS	Sn 후도금(무광)-Reflow	8
3	SIDE BRACKET	ST792586-2	BRASS	Sn 후도금(무광)	2

MATERIAL	SEE TABLE	KOREA ELECTRIC TERMINAL CO., LTD.			
FINISH	SEE TABLE				
WIRE RANGE	-		CLASS 060		
INSULATION	-		TYPE SMD		
LTR	REVISION RECORD	DR., CHK., APP., DATE	TOLERANCE DEVIATION AS NOTED	SCALE 2/1	PART NO. MG646269-5
	DR. JH.K 18.11.13	CHK.			
	CHK. YSW 18.11.13	APP. SSH 18.11.13	PART-NAME	060 8M SMD PINBLOCK ASSY	