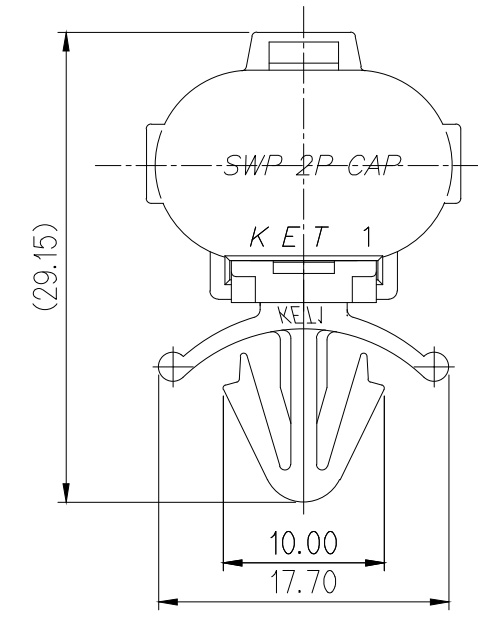
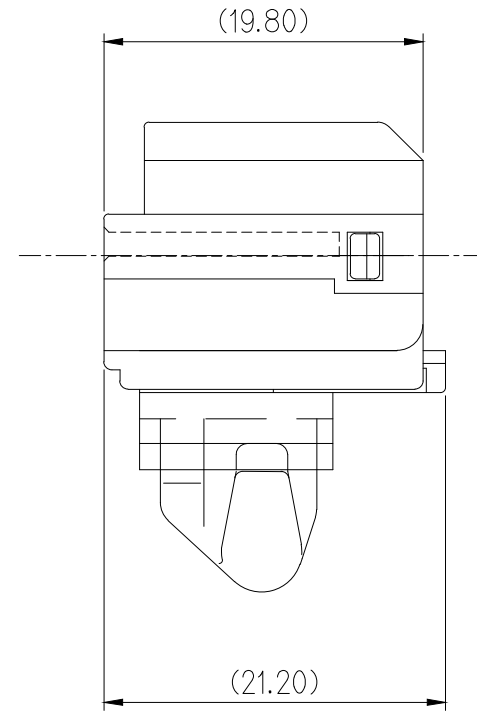
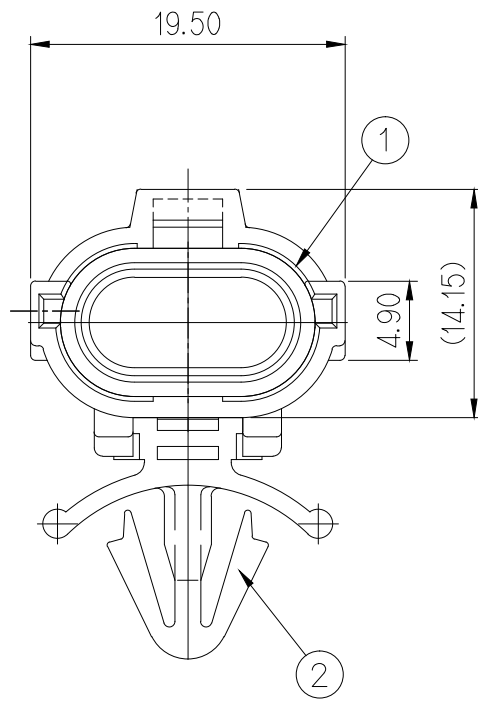


GENERAL TOLERANCE (HOUSING)							USED ON
10 MAX	50 MAX	100 MAX	250 MAX	250 VR	ANGLE	ECCENT	
±0.2	±0.3	±0.55	±0.95	±1.4	±30'	0.1	

NO	PART NO	PART NAME	MATERIAL	FINISH	U/S
1	MG642552	MG672551 SWP 2P CAP HS'G	PBT	BLACK	1
		R600018 SWP 2P I/SEAL	SILICONE	RED	1
2	MG630418	SWP CLIP	NYLON	BLACK	1

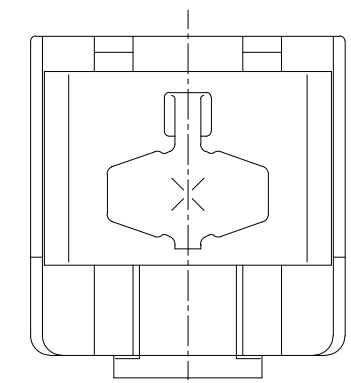


주 기

- 기능상 유해한 BURR 및 WELDLINE 등이 없을 것.
- 적용 HOUSING : MG610320
- 제품내 함유된 6대 유해물질 (납,수은,카드뮴,6가크롬, PBBs,PBDEs)은 EV ELV 지침 및 RoHS 법규에서 지정한 최대 허용 농도를 초과해서는 안된다.

NOTE

- MUST BE FREE OF FLASH, WELDLINE AND IMPERFECTION THAT AFFECT FUNCTION.
- APPLICABLE HOUSING : MG610320
- 3.6 HAZARDOUS SUBSTANCES IN PARTS (LEAD, MERCURY, CADMIUM, HEXAVALENT CHROMIUM, PBBs, PBDEs) SHALL NOT EXCEED THE MAXIMUM PERMISSIBLE CONCENTRATION PRESCRIBED UNDER EU ELV DIRECTIVE & RoHS REGULATION.



APPROVED
 2019-11-05
 KOREA ELECTRIC
 TERMINAL CO., LTD.
 Korea Electric Terminal Co., LTD.

ISSUE MARK

						MATERIAL	SEE TABLE	KOREA ELECTRIC TERMINAL CO., LTD.	
						FINISH	SEE TABLE		
						WIRE RANGE	-	CLASS	-
						INSULATION	-	TYPE	-
LTR	REVISION RECORD	DR.	CHK.	APP.	DATE	TOLERANCE EXCEPT AS NOTED	SEE TABLE	SCALE	2/1
DR.	JMS. 16. 02. 22	CHK.				PART NAME	SWP 2P CAP CLIP ASS'Y		
CHK.	KMH. 16. 02. 22	APP.	BIN.	16. 02. 22				PART NO.	MG646005-5