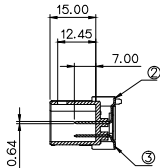
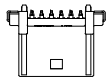
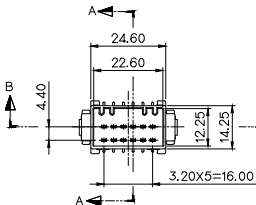


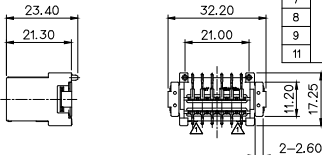
GENERAL TOLERANCE (TERMINAL)					GENERAL TOLERANCE (HOUSING)					USED ON		
10MAX	20MAX	45MAX	ANGLE	ECCENT	10MAX	50MAX	100MAX	250MAX	250VR	ANGLE	ECCENT	
±0.2	±0.25	±0.3	±30'	0.1	±0.2	±0.3	±0.55	±0.95	±1.4	±30'	0.1	



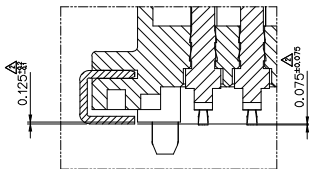
SECTION A-A



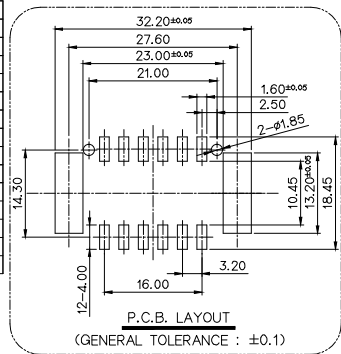
SECTION B-B



DETAIL C
(S= 5/1)



NO.	MATERIAL	COLOR
0		NATURAL
1	PPS-GF40	RED
2		BLUE
20		JADE
3		YELLOW
4		GRAY
40		DARK GRAY
41		LIGHT GRAY
* 5		BLACK
6		DARK GREEN
7		BROWN
8		LIGHT GREEN
9		MAGENTA
11		ORANGE



P.C.B. LAYOUT
(GENERAL TOLERANCE : ±0.1)

- 주 기
- 기능상 유해한 BURR 및 변형이 없어야 함.
 - 적용 FEMALE HOUSING : MG655828
 - 단자 주석 도금 - TYPE A Sn(무광택), (MS915-01)
Ni 하지 도금 + Sn(무광) + Reflow
 - 제품내 함유된 6대 유해물질 (납,수은,카드뮴,6가크롬, PBBs,PBDEs)은 EU ELV 지침 및 RoHS 법규에서 지정한 최대 허용 농도를 초과해서는 안된다.

NOTE

- MUST BE FREE OF BURR AND IMPERFECTION THAT AFFECT FUNCTION.
- APPLICATION FEMALE HOUSING : MG655828
- TIN-PLATED TERMINAL - TYPE A Sn(MATTE), (MS915-01)
Ni-PLATED UNDER + Sn(MATTE) + Reflow
- 6 HAZARDOUS SUBSTANCES IN PARTS (LEAD, MERCURY, CADMIUM, HEXAVALENT CHROMIUM, PBBs, PBDEs) SHALL NOT EXCEED THE MAXIMUM PERMISSIBLE CONCENTRATION PRESCRIBED UNDER EU ELV DIRECTIVE & RoHS REGULATION.

NO.	PART NAME	PART NO.	MATERIAL	FINISH	QTY.
①	060 12M SMD HOUSING	MG676326	SEE TABLE	SEE TABLE	1
②	060 SMD MALE TM'L (L)	ST792610-2	BRASS	Sn 후도금(무광)-Reflow	6
③	060 SMD MALE TM'L (S)	ST792611-2	BRASS	Sn 후도금(무광)-Reflow	6
④	060 SMD SIDE BRACKET	ST792612-2	BRASS	Sn 후도금(무광)	2

APPROVED

2018-12-07

KOREA ELECTRIC
TERMINAL CO., LTD.
Korea Electric Te
rminal Co., LTD.

ISSUE MARK

				MATERIAL	SEE TABLE	KETA KOREA ELECTRIC TERMINAL CO., LTD.
				FINISH	SEE TABLE	
△	리뷰	CSH	LSY	LSY	'15.08.11	CLASS
	리뷰	CSH	YSW	YSW	'15.04.14	
DR	REVISION RECORD	DR	CHK	APP.	DATE	PART NO.
DR	LJY '14.12.31	CHK	YSW '14.12.31	APP.	BIN '14.12.31	
CHK		APP.	BIN	'14.12.31		PART NAME
						SCALE
						1/1
						PART NO.
						MG645884
						ISSUE MARK
						060 12M SMD ASSY