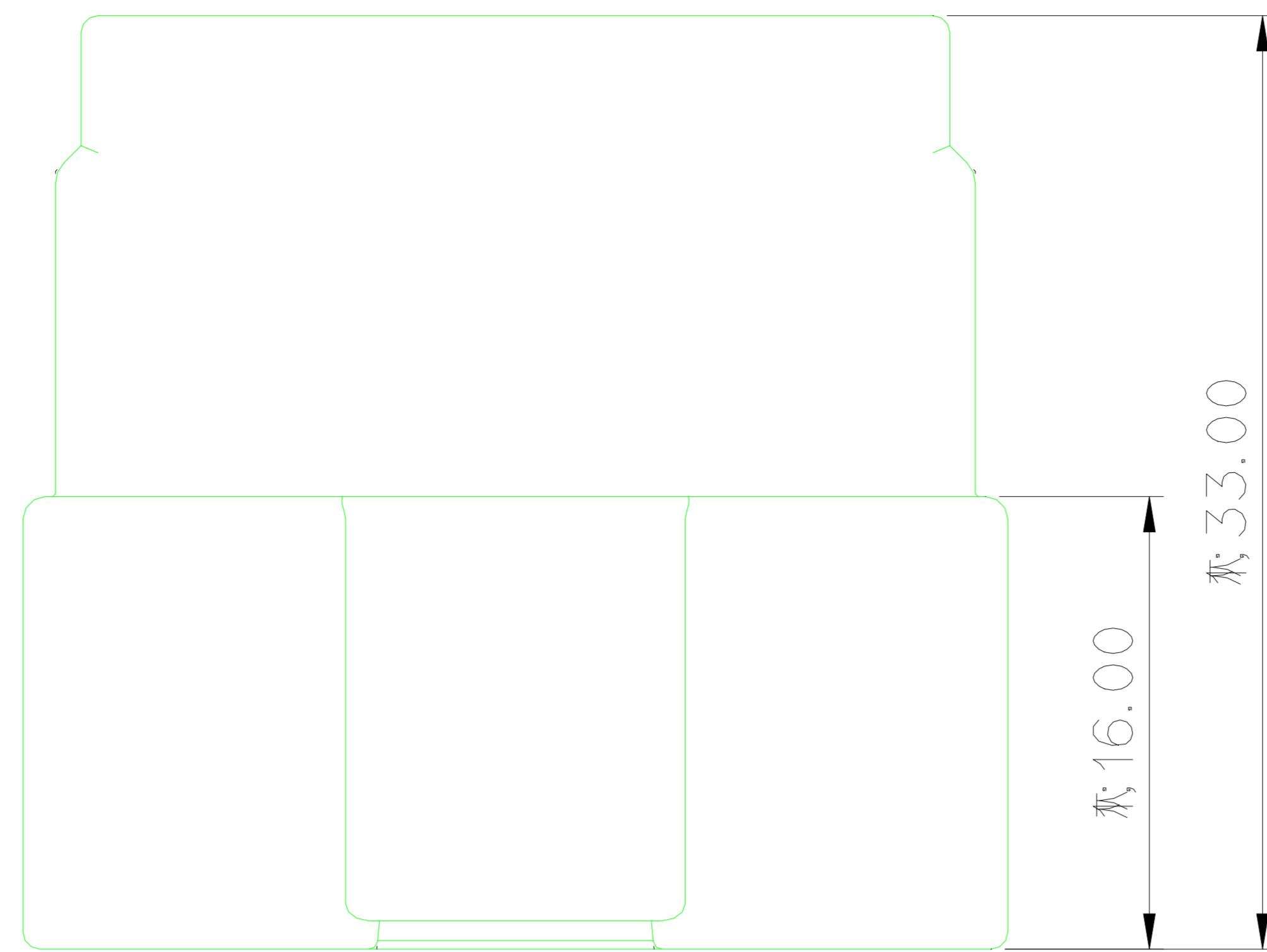


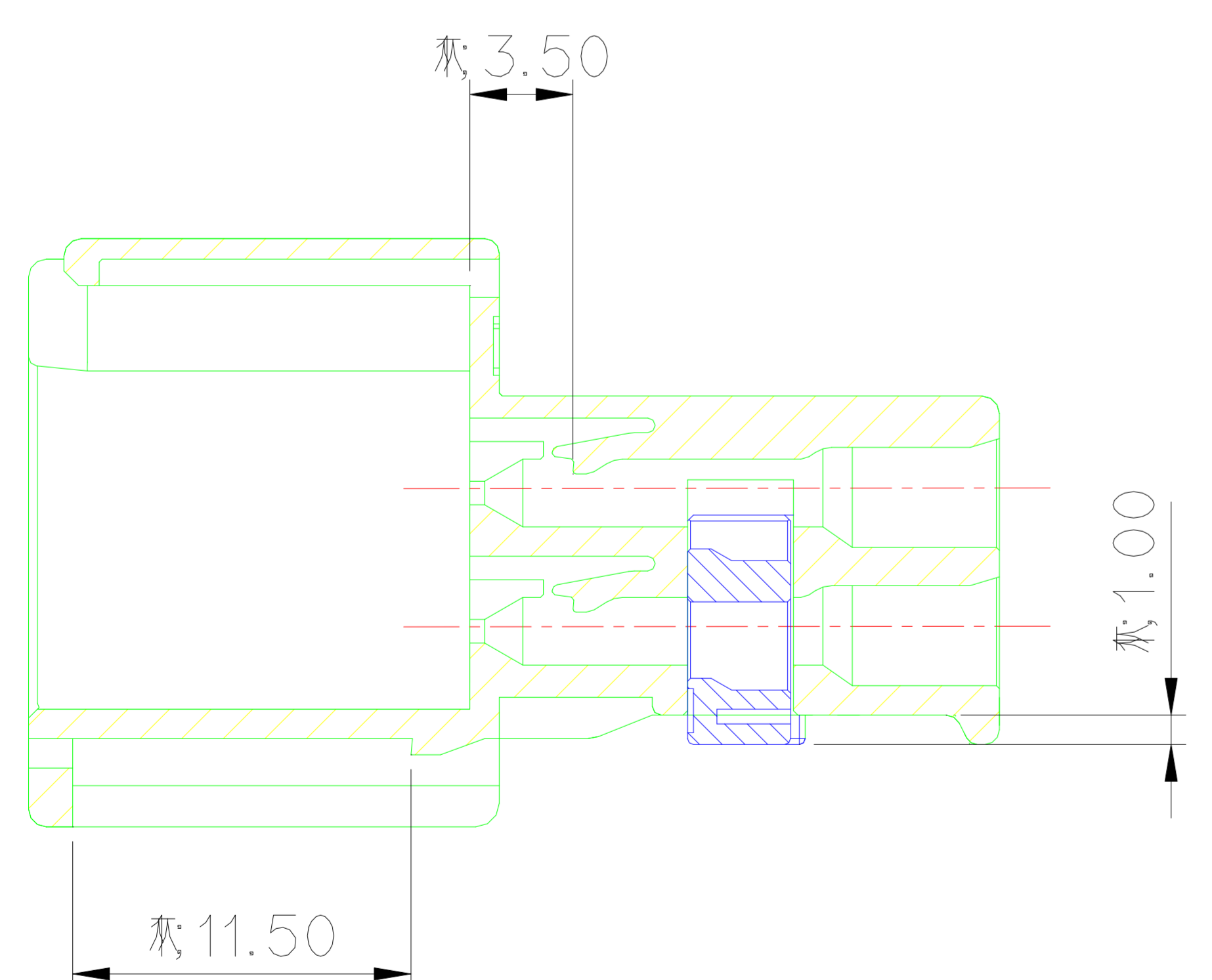
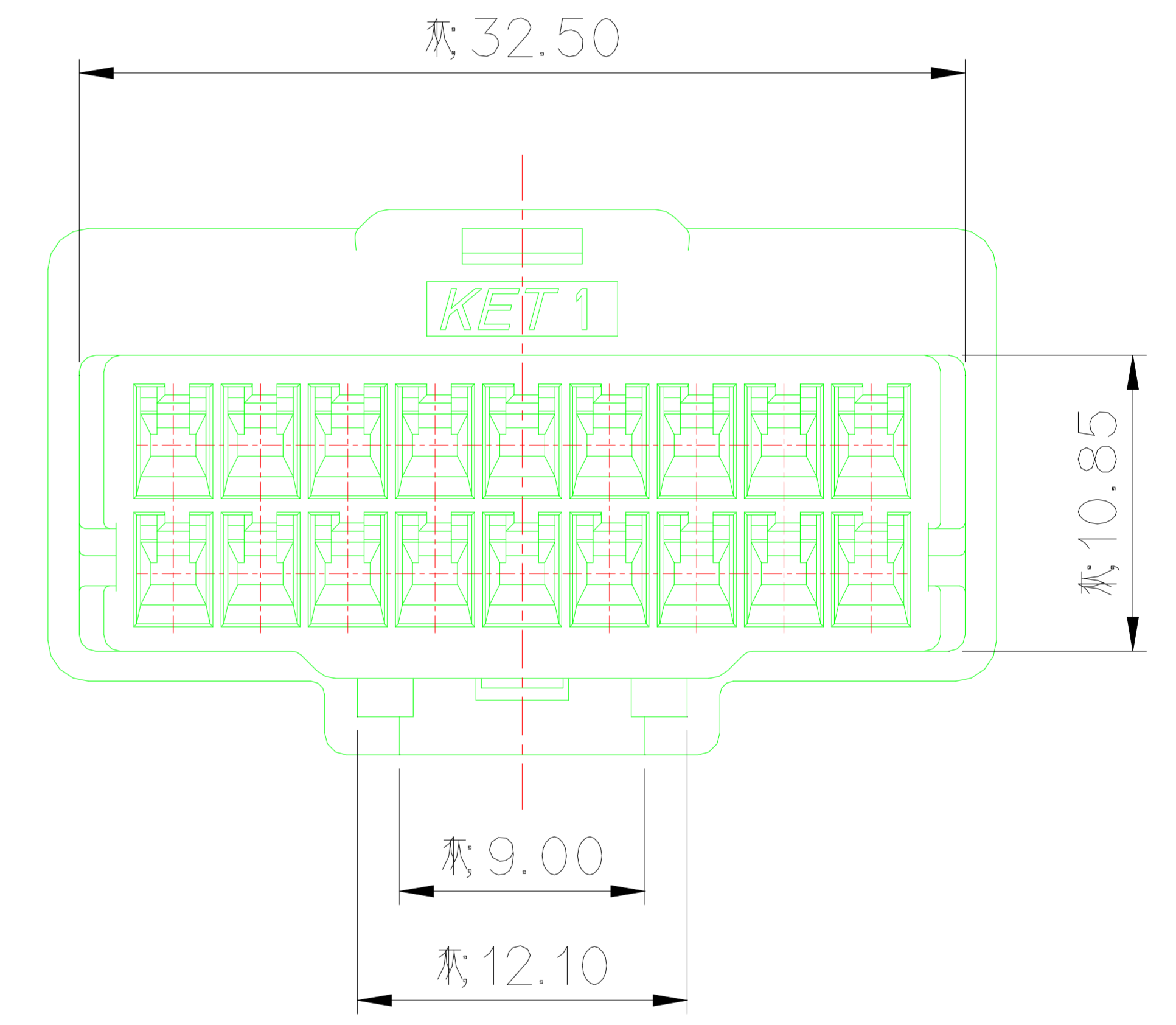
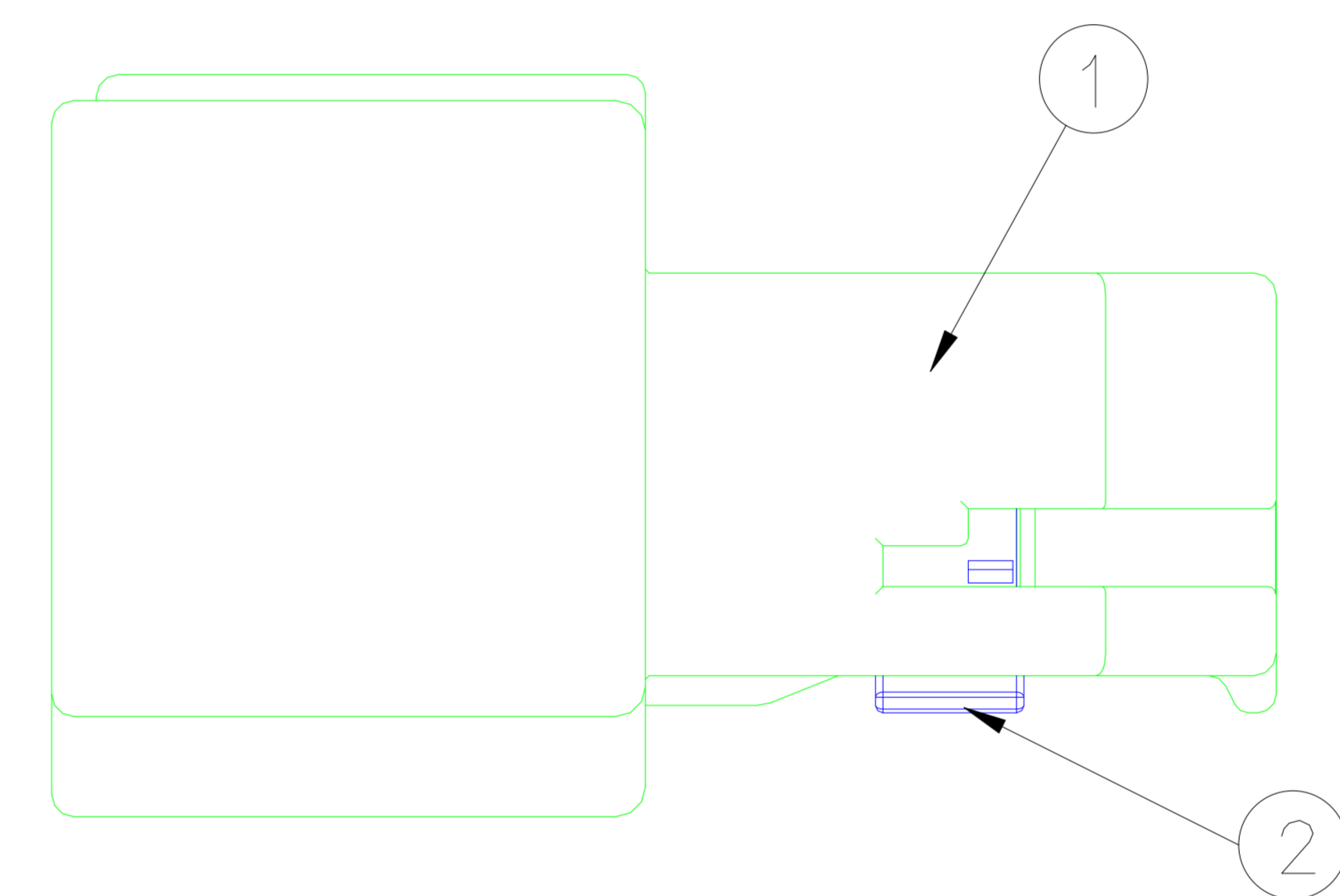
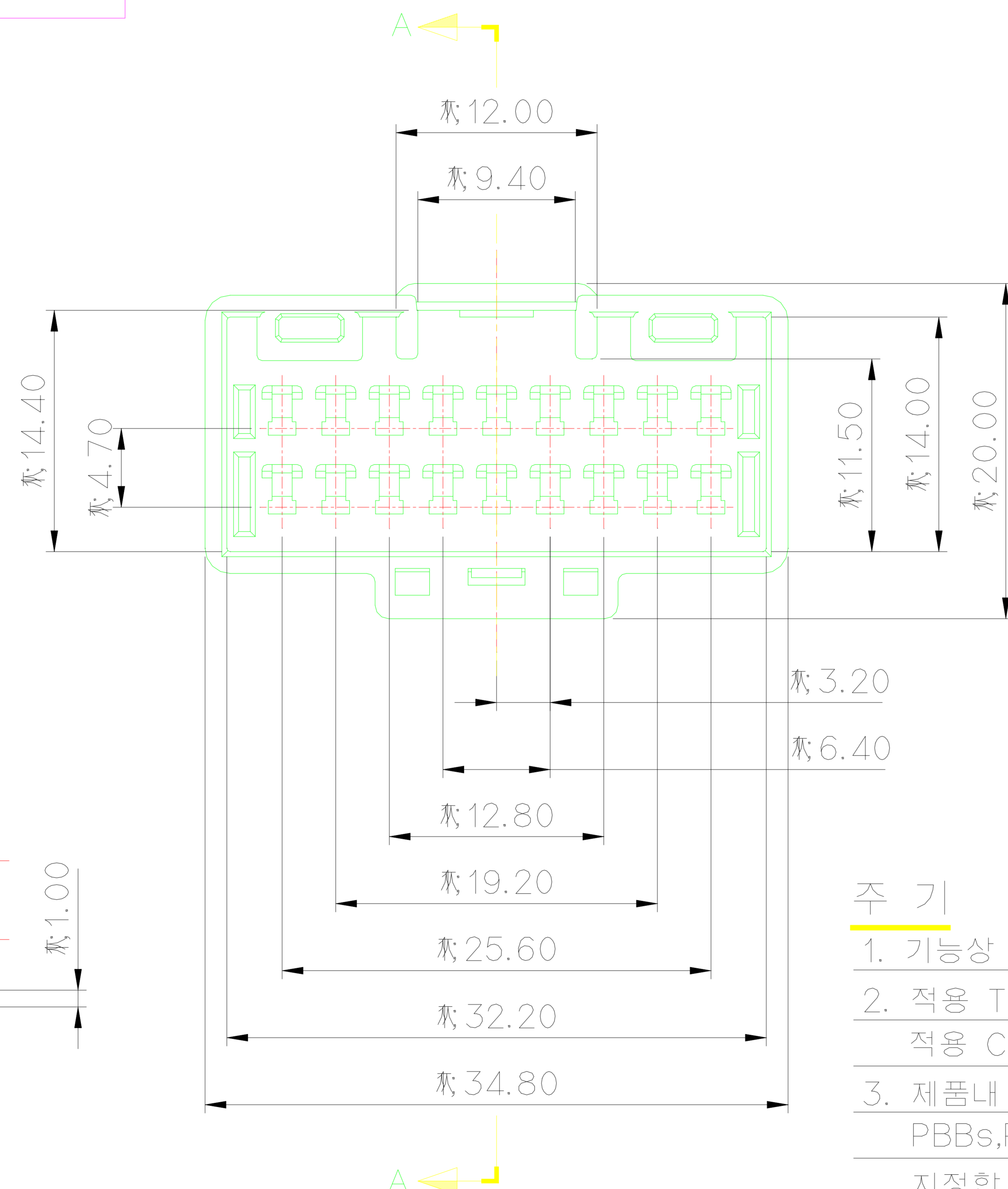
ISO VIEW



| GENERAL TOLERANCE (HOUSING) | | | | | | | USED ON |
|-----------------------------|-------|--------|--------|-------|-------|--------|---------|
| 10MAX | 50MAX | 100MAX | 250MAX | 250VR | ANGLE | ECCENT | |
| ±0.2 | ±0.3 | ±0.55 | ±0.95 | ±1.4 | ±30' | 0.1 | |

NOTE

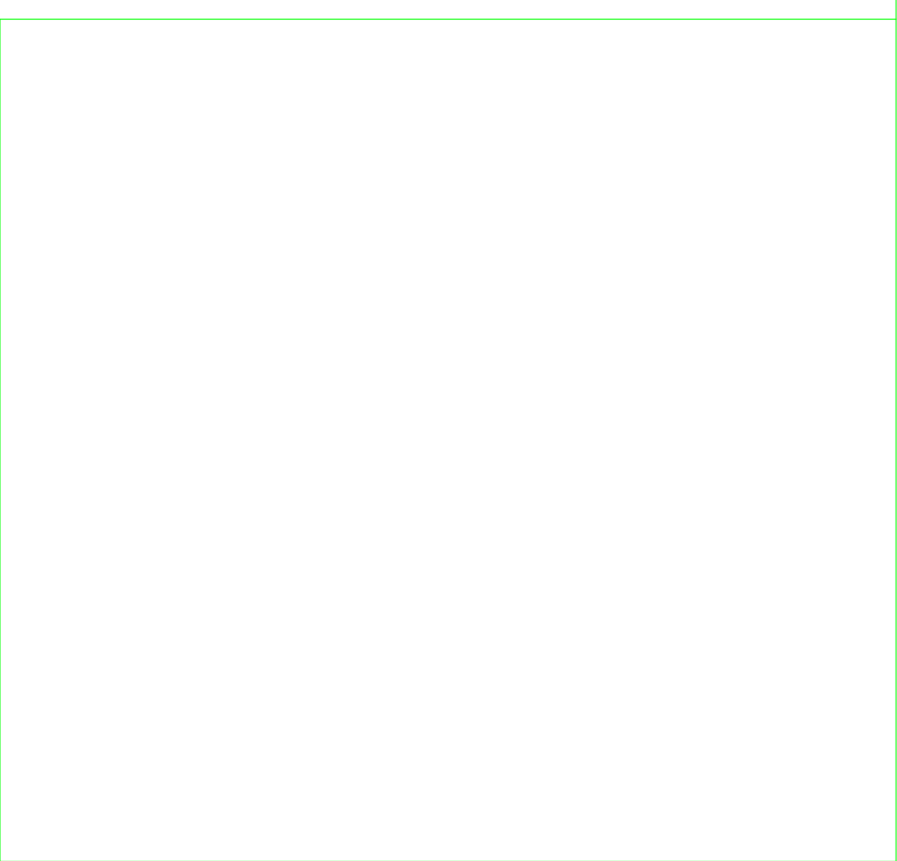
- MUST BE FREE OF FLASH, WELDLINE AND IMPERFECTION THAT AFFECT FUNCTION.
- APPLICABLE TERMINAL : ST741331-3, ST741332-3, ST741333-3
APPLICABLE CONNECTOR : MG655628
- 6 HAZARDOUS SUBSTANCES IN PARTS (LEAD, MERCURY, CADMIUM, HEXAVALENT CHROMIUM, PBBs, PBDEs) SHALL NOT EXCEED THE MAXIMUM PERMISSIBLE CONCENTRATION PRESCRIBED UNDER EU ELV DIRECTIVE & RoHS REGULATION.



SECTION A-A

주 기

- 기능상 유해한 BURR 및 WELDLINE 등이 없을 것.
- 적용 TERMINAL : ST741331-3, ST741332-3, ST741333-3
적용 CONNECTOR : MG655628
- 제품내 함유된 6대 유해물질 (납, 수은, 카드뮴, 6가크롬, PBBs, PBDEs)은 EU ELV 지침 및 RoHS 법규에서 지정한 최대 허용 농도를 초과해서는 안된다.



ISSUE MARK

| NO. | PART NAME | PART NO. | MATERIAL | COLOR | QTY. |
|-----|------------------|----------|----------|---------|------|
| 1 | N060 18M HOUSING | MG675626 | PBT | NATURAL | 1 |
| 2 | N060 18P SPACER | MG675627 | PBT | L/GRAY | 1 |

| | | | | | | | | | | | | |
|------|--|--|--|-----------------|------|------|-----------------|---------------------------|---------------|------------|-----------------------------------|-----------|
| LTR | | | | REVISION RECORD | DR. | CHK. | APP. | DATE | MATERIAL | SEE TABLE | KOREA ELECTRIC TERMINAL CO., LTD. | |
| DR. | | | | AJH. 2012.02.14 | CHK. | | KMH. 2012.02.16 | FINISH | SEE TABLE | WIRE RANGE | | CLASS 060 |
| CHK. | | | | CSH. 2012.02.16 | APP. | | HSH. 2012.02.16 | INSULATION | | | TYPE | |
| | | | | | | | | TOLERANCE EXCEPT AS NOTED | SEE TABLE | SCALE 2/1 | PART NO. | MG645625 |
| | | | | | | | | PART NAME | N060 18M ASSY | | | |