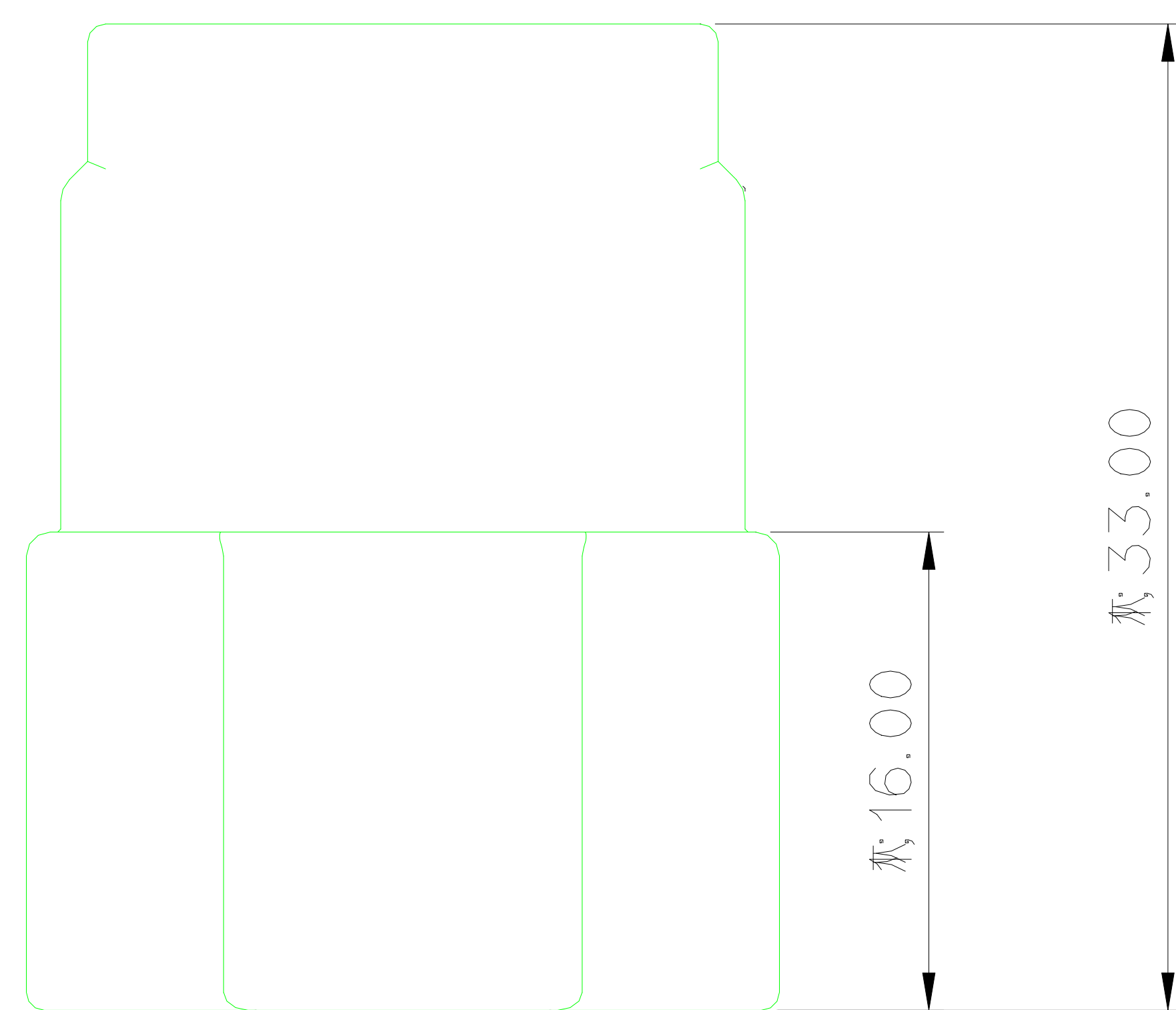


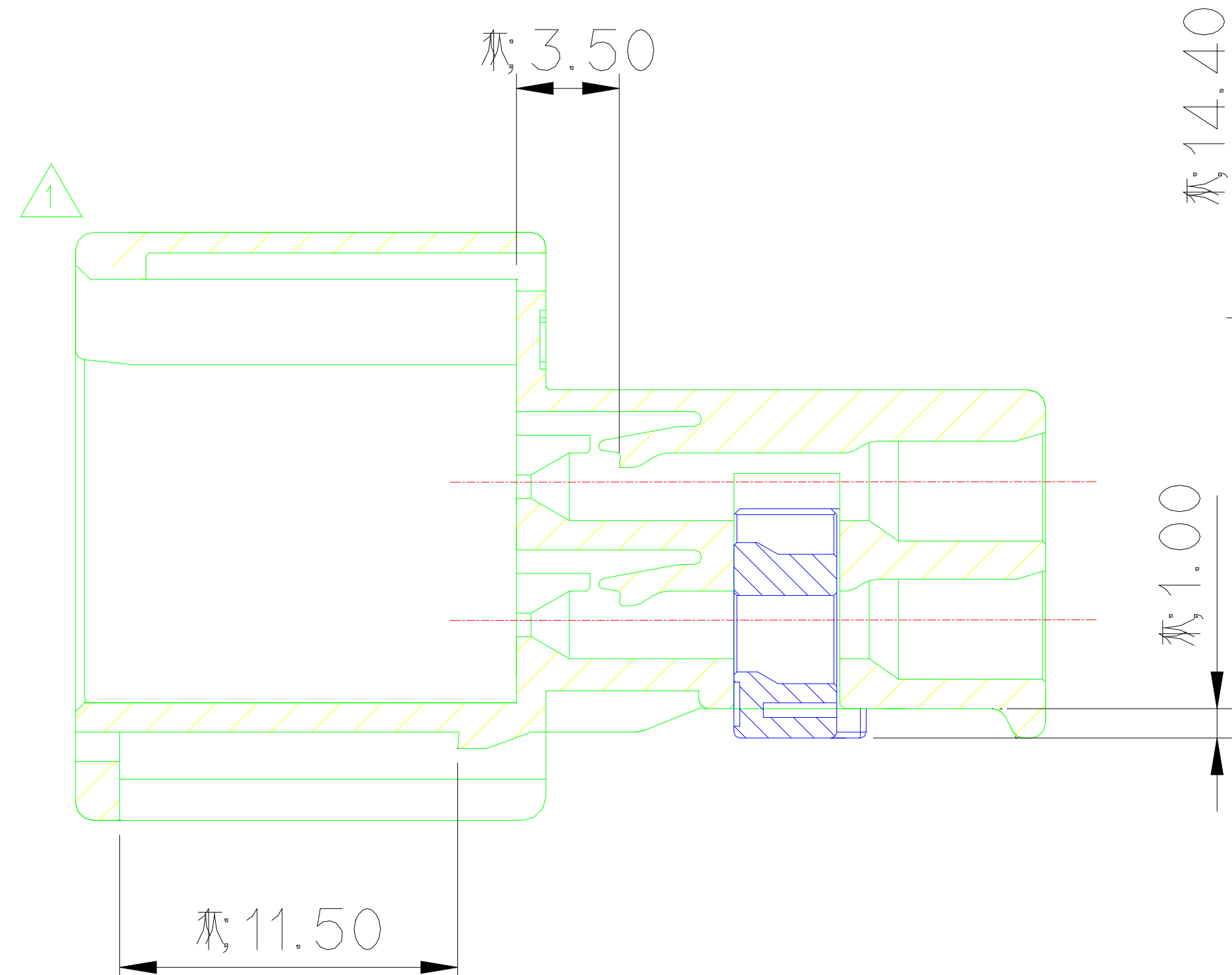
ISO VIEW



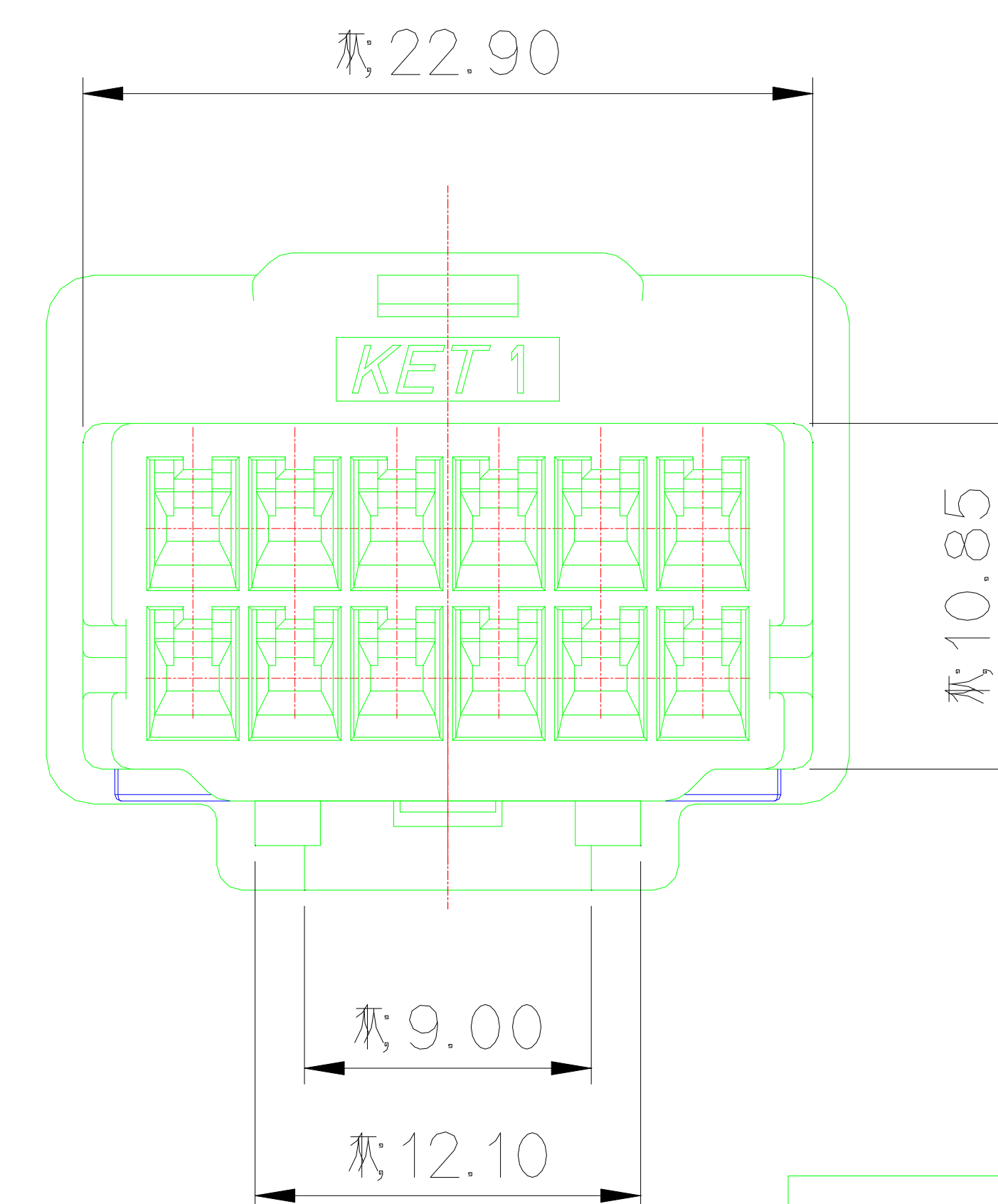
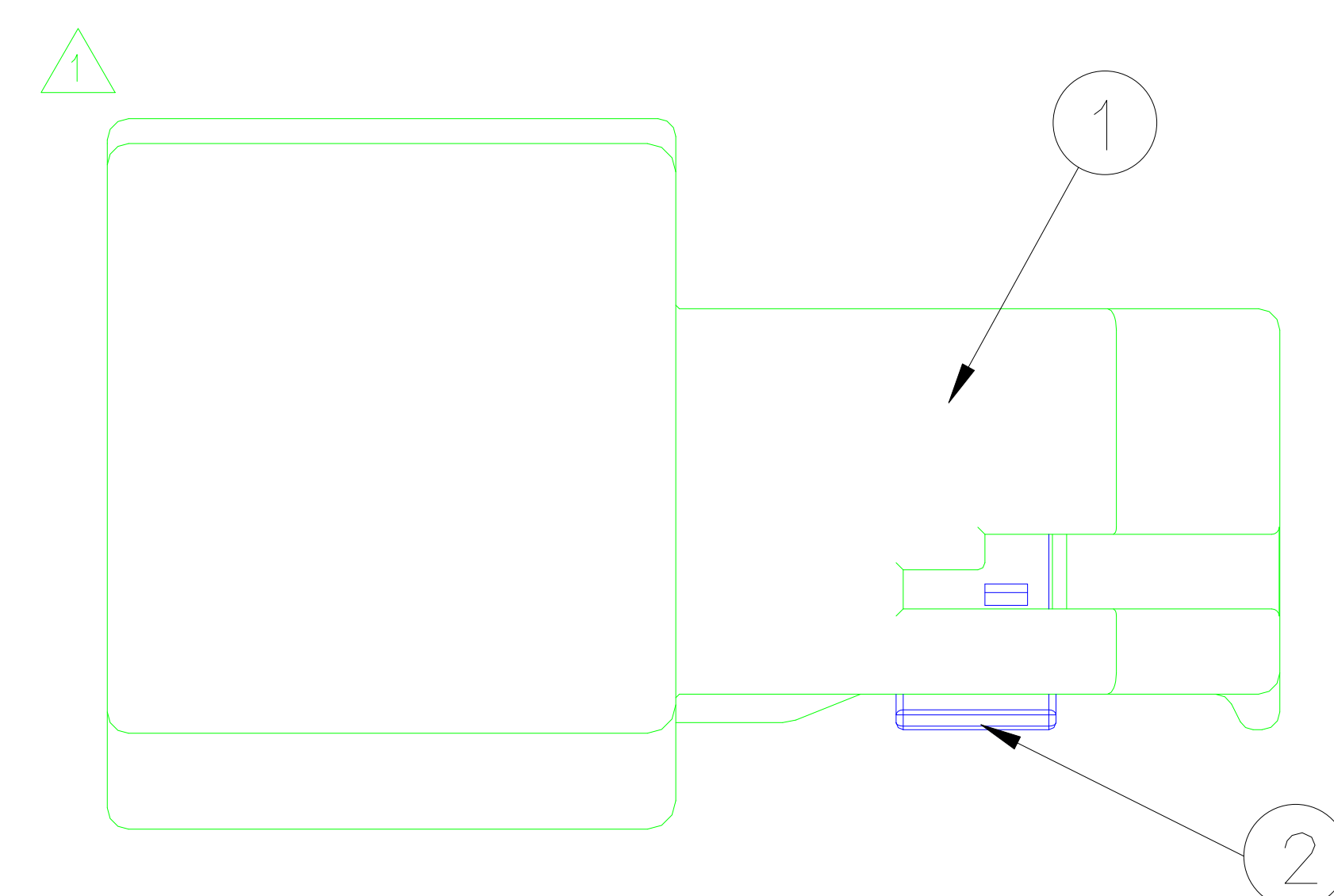
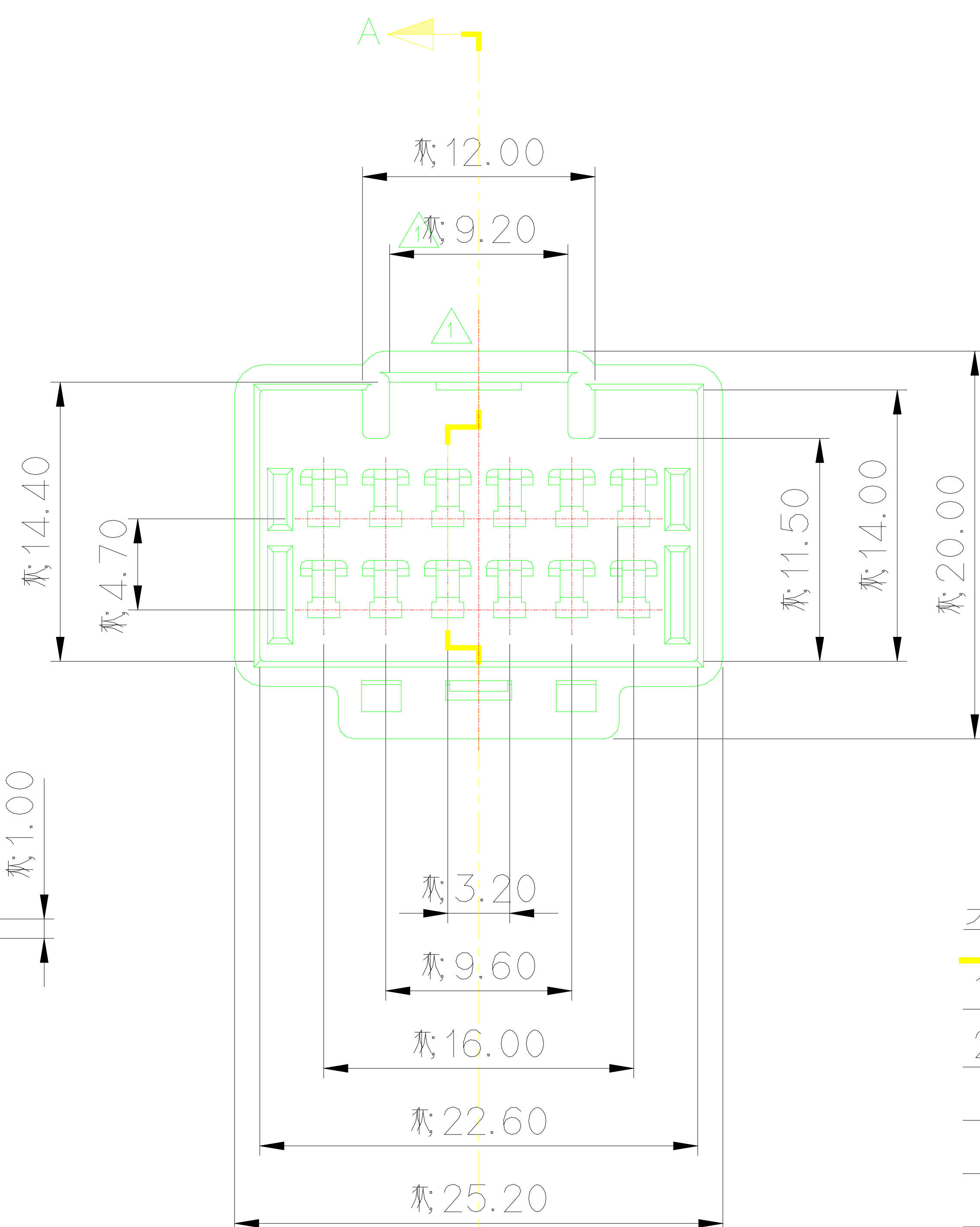
GENERAL TOLERANCE (HOUSING)							USED ON
10MAX	50MAX	100MAX	250MAX	250VR	ANGLE	ECCENT	
±0.2	±0.3	±0.55	±0.95	±1.4	±30'	0.1	

NOTE

- MUST BE FREE OF FLASH, WELDLINE AND IMPERFECTION THAT AFFECT FUNCTION.
- APPLICABLE TERMINAL : ST741331-3, ST741332-3, ST741333-3  
APPLICABLE CONNECTOR : MG655613
- 6 HAZARDOUS SUBSTANCES IN PARTS (LEAD, MERCURY, CADMIUM, HEXAVALENT CHROMIUM, PBBs, PBDEs) SHALL NOT EXCEED THE MAXIMUM PERMISSIBLE CONCENTRATION PRESCRIBED UNDER EU ELV DIRECTIVE & RoHS REGULATION.



SECTION A-A



주 기

- 기능상 유해한 BURR 및 WELDLINE 등이 없을 것.
- 적용 TERMINAL : ST741331-3, ST741332-3, ST741333-3  
적용 CONNECTOR : MG655613
- 제품내 함유된 6대 유해물질 (납,수은,카드뮴,6가크롬, PBBs,PBDEs)은 EU ELV 지침 및 RoHS 법규에서 지정한 최대 허용 농도를 초과해서는 안된다.

ISSUE MARK

NO.	PART NAME	PART NO.	MATERIAL	COLOR	QTY.
1	N060 12M HOUSING	MG675611	PBT	NATURAL	1
2	N060 12P SPACER	MG675612	PBT	L/GRAY	1

MATERIAL	SEE TABLE	<b>KET</b> KOREA ELECTRIC ENGINEERED TERMINAL CO., LTD.						
FINISH	SEE TABLE							
WIRE RANGE		CLASS 060						
INSULATION		TYPE						
LTR	ECO-1209-160 파를 도면 제작성 (MALE TML 간섭 개선)	HSR	CWK	HSH	12.09.27	TOLERANCE EXCEPT AS NOTED	SCALE 2/1	PART NO. MG645610
DR.	HSR. 2012.09.06	CHK.				SEE TABLE		
CHK.	CWK. 2012.09.06	APP.	HSH. 2012.09.06			PART NAME	N060 12M ASSY	