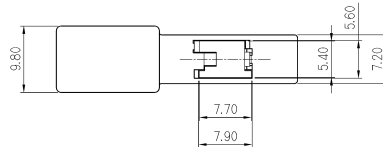
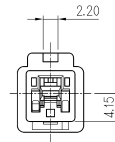
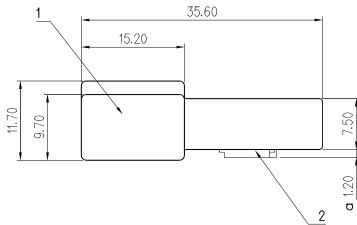
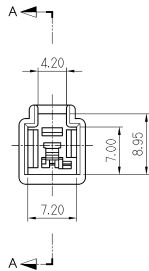


SECT' A-A



GENERAL TOLERANCE (HOUSING)							USED ON
1MAX	5MAX	10MAX	20MAX	45MAX	ANGLE	ECCENT	
±0.10	±0.15	±0.20	±0.25	±0.30	±30'	0.10	

NOTE

- 제품기능상 유해한 BURR, 변형 및 WELDLINE 등이 없을것.
- 적용 TERMINAL: ST740672, 673, 674
- 적용 HOUSING: MG651194
- SPACER는 본 도면과 같이 1차 LOCK'G 상태로 유지, 공급할 것.
- 'a'부 치수는 0.80 - 1.40까지 관리한다.

NO.	MATERIAL	COLOR
0	P B T :	NATURAL
1		RED
2		BLUE
3		YELLOW
4		GRAY
5		BLACK
6		W/GREEN
7		BROWN
8		GREEN



ISSUE MARK

NO.	PART NO.	PART NAME	MATERIAL	FINISH
1	MG671195	.090 II 1P REC. HOUSING	SEE TABLE	NATURAL
2	MG671196	.090 II 1P REC. SPACER		NATURAL

MATERIAL	SEE TABLE	KET ENGINEERING	KOREA ELECTRIC					
FINISH	SEE TABLE		TERMINAL CO., LTD.					
WIRE RANGE		CLASS	.090 II					
INSULATION		TYPE	7282-1010					
LTR	REVISION RECORD	DR	CHK	APP.	DATE	ISSUE MARK	SCALE	PART NO.
DR.	WON, '97.03.07	CHK	97	97	3/17	SEE TABLE	2/1	MG641197
CHK	S. I. SANG	APP.	3/17	3/18		PART NAME		.090 II 1P REC. HOUSING ASS'Y