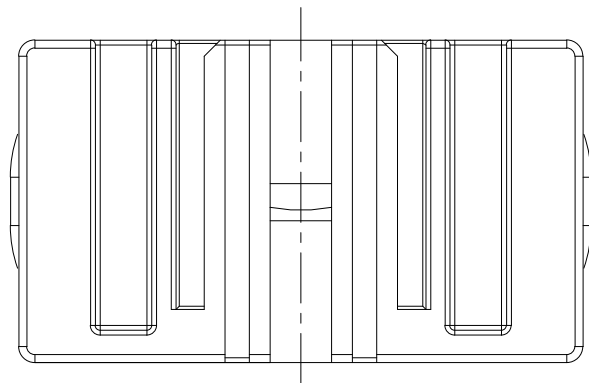
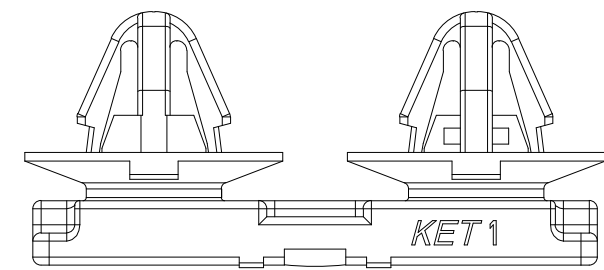
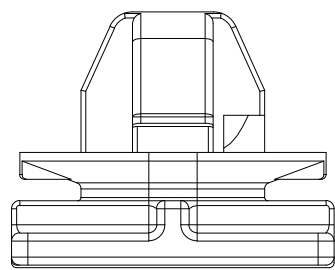
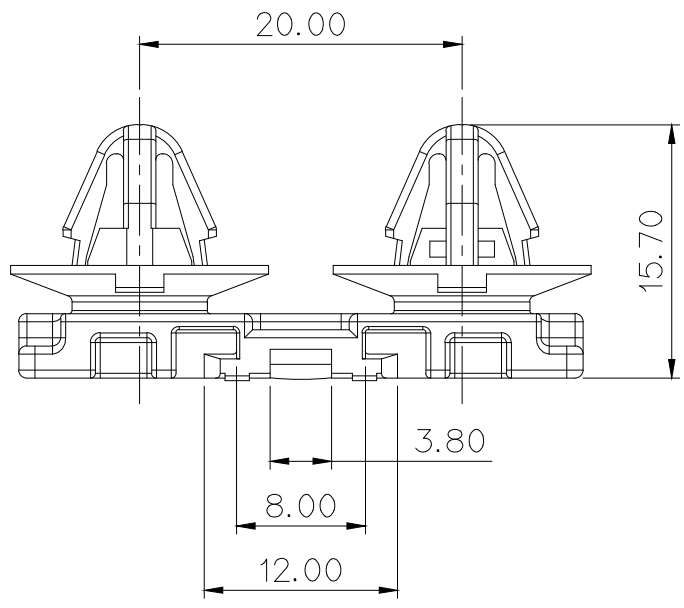
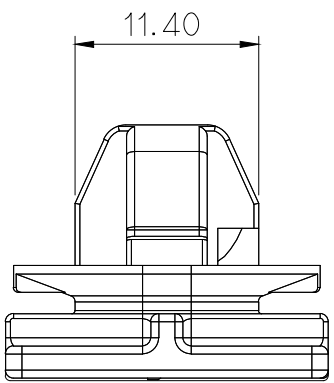
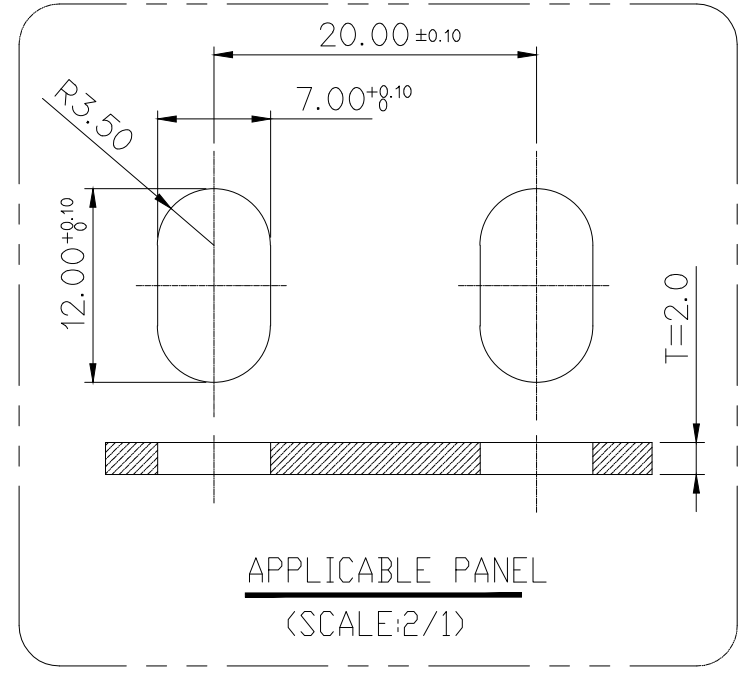
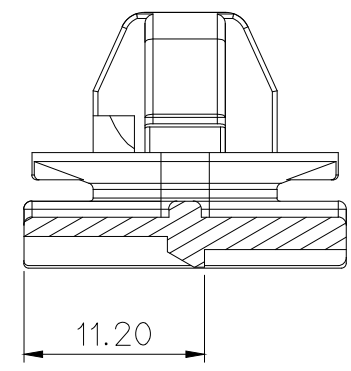


GENERAL TOLERANCE (HOUSING)										USED ON
10MAX	30MAX	50MAX	70MAX	100MAX	120MAX	250MAX	250VR	ANGLE	ECCENT	
±0.15	±0.20	±0.30	±0.40	±0.50	±0.75	±0.90	±1.4	±30'	0.1	



NO.	MATERIAL	COLOR
0	NYLON:	NATURAL
1	PA66	RED
2		BLUE
3		YELLOW
40		DARK GRAY
41		LIGHT GRAY
* 5		BLACK
6		DARK GREEN
7		BROWN
8		LIGHT GREEN
9		MAGENTA
11		ORANGE

**주 기**

- 기능상 유해한 BURR, 수축, 변형등이 없을 것.
- CLIP INSERTION FORCE : 6.0Kg이하  
RETENTION FORCE : 11.0Kgf 이상
- 제품내 함유된 6대 유해물질 (납, 수은, 카드뮴 6가크롬, PBBs, PBDEs)은 EU ELV 지침 및 RoHS 법규에서 지정한 최대 허용 농도를 초과해서는 안된다.

**NOTE**

- MUST BE FREE OF BURR AND IMPERFECTION THAT AFFECT FUNCTION.
- CLIP INSERTION FORCE : 6.0Kg MAX  
RETENTION FORCE : 11.0Kgf MIN
- 6 HAZARDOUS SUBSTANCES IN PARTS (LEAD, MERCURY, CADMIUM, HEXAVALENT CHROMIUM, PBBs, PBDEs) SHALL NOT EXCEED THE MAXIMUM PERMISSIBLE CONCENTRATION PRESCRIBED UNDER EU ELV DIRECTIVE & RoHS REGULATION.

**APPROVED**  
**2018-12-10**  
KOREA ELECTRIC  
TERMINAL CO., LTD.  
Connector Development Team 1

ISSUE MARK

					MATERIAL	SEE TABLE	<b>KET</b> KOREA ELECTRIC ENGINEERED TERMINAL CO., LTD.	
					FINISH	SEE TABLE		
					WIRE RANGE	CLASS	1.7 - 2.6t	
					INSULATION	TYPE		
LTR	REVISION RECORD	DR.	CHK.	APP.	DATE	TOLERANCE EXCEPT AS NOTED	SCALE 2/1	PART NO. MG635681
	DR. JSY 2013.11.18		CHK.					
	CHK.		APP.	CWK				
						PART NAME	09011 DOUBLE CLIP	