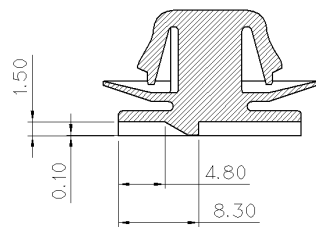
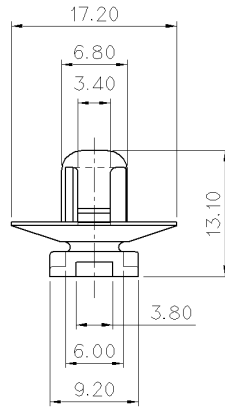
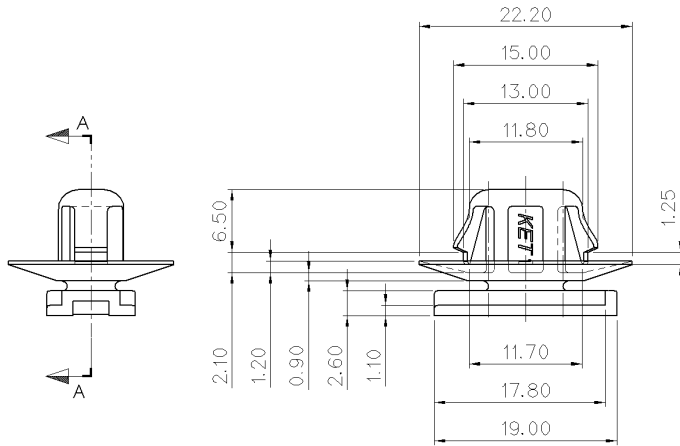
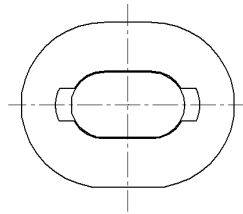
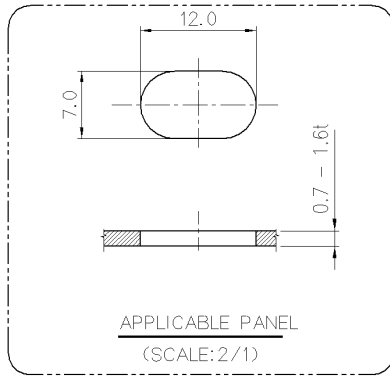


PART NO. MG634647

CUSTOMER DRAWING



SECTION A-A

GENERAL TOLERANCE (HOUSING)							USED ON
10MAX	50MAX	100MAX	250MAX	250VR	ANGLE	ECCENT	
±0.2	±0.3	±0.55	±0.95	±1.4	±30'	0.1	

주 기

1. 지시하지 않은 반경 R은 0.3-0.5로 한다.
2. 기능상 유해한 BURR 및 WELDLINE 등이 없을 것.
3. 제품내 함유된 6대 유해물질 (납,수은,카드뮴,6가크롬, PBBs,PBDEs)은 EU ELV 지침 및 RoHS 법규에서 지정한 최대 허용 농도를 초과해서는 안된다.

NOTE

1. UNLESS OTHERWISE SPECIFIED ALL RADIUS TO BE 0.3-0.5 RADIUS.
2. MUST BE FREE OF BURR, WELDLINE AND IMPERFECTION THAT AFFECT FUNCTION.
3. 6 HAZARDOUS SUBSTANCES IN PARTS (LEAD, MERCURY, CADMIUM, HEXAVALENT CHROMIUM, PBBs, PBDEs) SHALL NOT EXCEED THE MAXIMUM PERMISSIBLE CONCENTRATION PRESCRIBED UNDER EU ELV DIRECTIVE

NO.	MATERIAL	COLOR
0	NYLON66	NATURAL
1		RED
2		BLUE
3		YELLOW
40		DARK GRAY
41		LIGHT GRAY
* 5		BLACK
6		DARK GREEN
7		BROWN
8		LIGHT GREEN
9		MAGENTA
11		ORANGE

ISSUE MARK

						MATERIAL	SEE TABLE	 KOREA ELECTRIC TERMINAL CO., LTD.
						FINISH	SEE TABLE	
						WIRE RANGE	CLASS	
						INSULATION	TYPE	
LTR	REVISION RECORD	DR.	CHK.	APP.	DATE	TOLERANCE EXCEPT AS NOTED	SCALE 5/1	PART NO. MG634647
DR.	KMH 09.05.22	CHK.				PART NAME	SWP CLIP (SLOT 7*12)	
CHK.		APP.						

DIMENSIONS IN MM