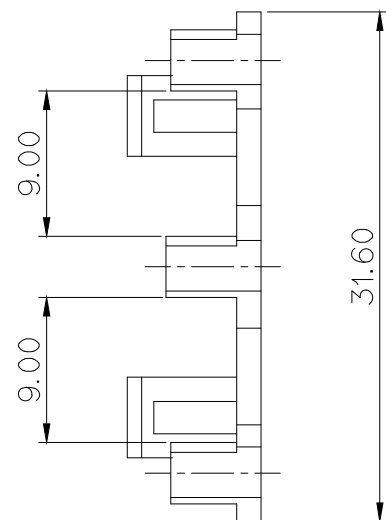
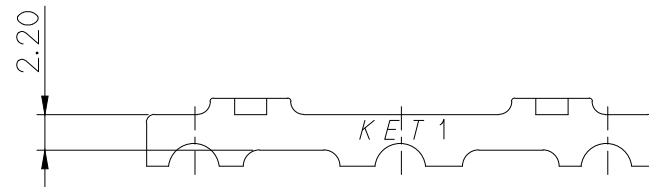
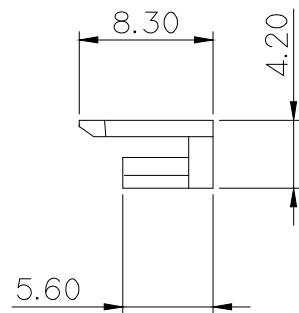
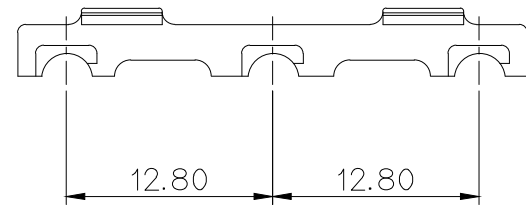
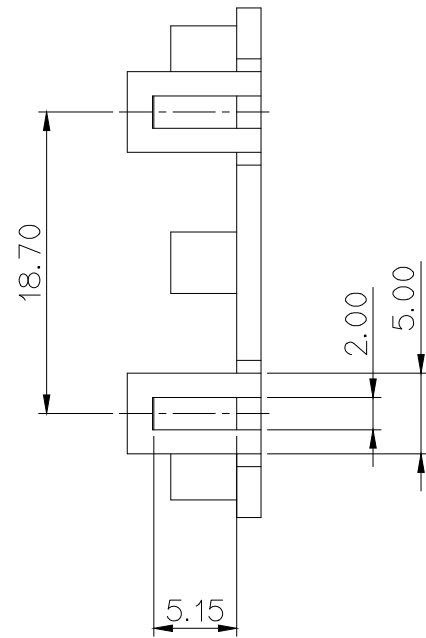


GENERAL TOLERANCE (HOUSING)					USED ON
10MAX	20MAX	45MAX	ANGLE	ECCENT	
±0.2	±0.25	±0.3	±30'	0.1	



주 기

- 1.기능상 유해한 BURR, WELDLINE이 없을 것
- 2.적용 HOUSING : MG613212
- 3.제품내 함유된 6대 유해물질 (납,수은,카드뮴,6가크롬, PBBs,PBDEs)은 EU ELV 지침 및 RoHS 법규에서 지정한 최대 허용 농도를 초과해서는 안된다.

NO.	MATERIAL	COLOR
0	PA66	NATURAL
1		RED
2		BLUE
3		YELLOW
5		BLACK

NOTE

1. MUST BE FREE OF BURR, WELDLINE AND IMPERFECTION THAT AFFECT FUNCTION.
2. APPLICABLE HOUSING: MG613212
3. 6 HAZARDOUS SUBSTANCES IN PARTS (LEAD, MERCURY, CADMIUM, HEXAVALENT CHROMIUM, PBBs, PBDEs) SHALL NOT EXCEED THE MAXIMUM PERMISSIBLE CONCENTRATION PRESCRIBED UNDER EU ELV DIRECTIVE & RoHS REGULATION.

APPROVED
2017-08-10
KOREA ELECTRIC
TERMINAL CO., LTD.
 Electronic Product Development Team

ISSUE MARK

		MATERIAL Δ PA66 (V0)		KET KOREA ELECTRIC ENGINEERED TERMINAL CO., LTD.
		FINISH RED		
		WIRE RANGE		CLASS 060
		INSULATION		TYPE
LTR	REVISION RECORD	DR.	CHK.	APP.
DR.	KSH. 2007.01.21	CHK.		1/31
CHK.		APP.	C B H	
		TOLERANCE EXCEPT AS NOTED SEE TABLE		SCALE 2/1
		PART NAME		PART NO. MG633861
				060 3P R/H