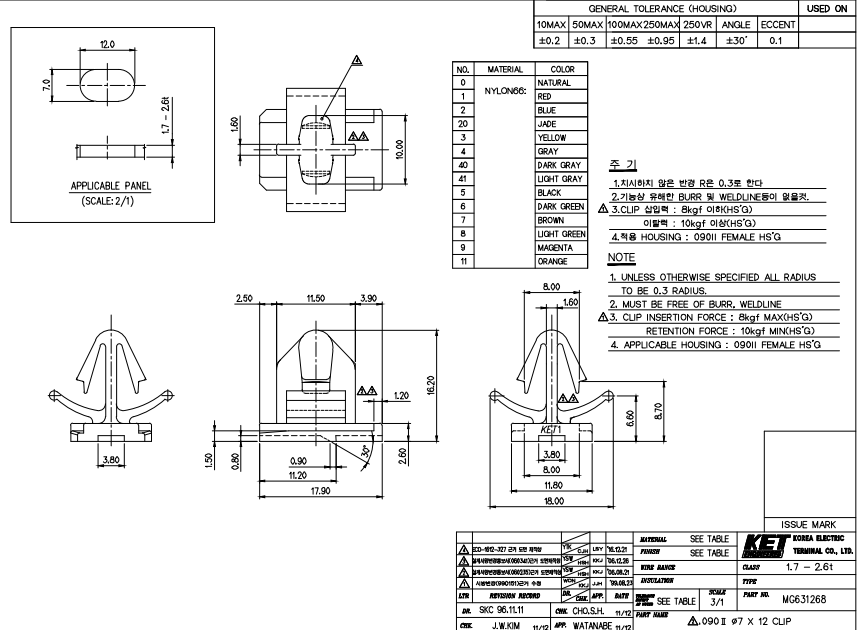


CUSTOMER DRAWING  
PART NO. MG631268



GENERAL TOLERANCE (HOUSING)				USED ON	
10MAX	50MAX	100MAX	250MAX	250VR	ANGLE
±0.2	±0.3	±0.55	±0.95	±1.4	±30
					0.1

NO.	MATERIAL	COLOR
0		NATURAL
1	NYLON66	RED
2		BLUE
30		LAKE
3		YELLOW
4		GRAY
40		DARK GRAY
41		LIGHT GRAY
5		BLACK
6		DARK GREEN
7		BROWN
8		LIGHT GREEN
9		MAGENTA
11		ORANGE

주 기  
 1. 치사(치) 양은 반경 R은 0.3로 한다.  
 2. 기는상 무해한 BURR 및 WELDLINE 등이 없도록.  
 3. CLIP 삽입력 : 8kgf (MAX/HS'G)  
 4. 적용 HOUSING : 09011 FEMALE HS'G

NOTE  
 1. UNLESS OTHERWISE SPECIFIED ALL RADIUS TO BE 0.3 RADIUS.  
 2. MUST BE FREE OF BURR, WELDLINE.  
 3. CLIP INSERTION FORCE : 8kgf (MAX/HS'G)  
 RETENTION FORCE : 10kgf (MIN/HS'G)  
 4. APPLICABLE HOUSING : 09011 FEMALE HS'G

NO.	REVISION	DATE	BY	CHK	APP	REASON
1	1.0	2017.08.10	J.W.K.M	J.W.K.M	J.W.K.M	INITIAL RELEASE

ISSUE MARK

REVISION	DATE	BY	CHK	APP	REASON
1.0	2017.08.10	J.W.K.M	J.W.K.M	J.W.K.M	INITIAL RELEASE

APPROVED  
2017-08-10