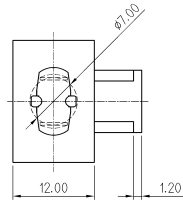
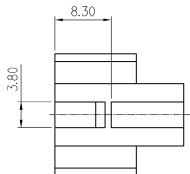
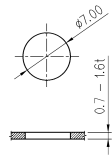
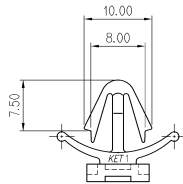
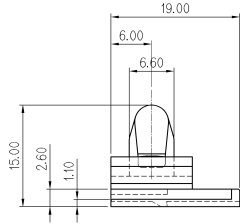
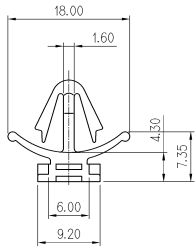


GENERAL TOLERANCE (HOUSING)					USED ON
10MAX	20MAX	45MAX	ANGLE	ECCENT	
±0.2	±0.25	±0.3	±30'	0.1	




NOTE

1. 기능상 유해한 BURR, 수축, 변형등이 없을 것.
2. CLIP INSERTION FORCE: Kg이하
RETENTION FORCE: 10 Kg이상
3. 적용 HOUSING: SDL/ SWP CONNECTOR
4. 적용 PANEL SIZE:



ISSUE MARK

MATERIAL		NYLON66		 KOREA ELECTRIC TERMINAL CO., LTD.				
FINISH		NATURAL						
WIRE RANGE				CLASS				
INSULATION				TYPE				
LTR	REVISION RECORD	DR	CHK	APP.	DATE	DRAWING REVISION BY SERIES	SCALE	PART NO.
DR.	MAN 95.05.27	CHK	SK	APP.	95.05.27	SEE TABLE	2/1	MG630922
CHK.		APP.				PART NAME	SDL,SWP CLIPII Ø 7.0 HOLE TYPE	