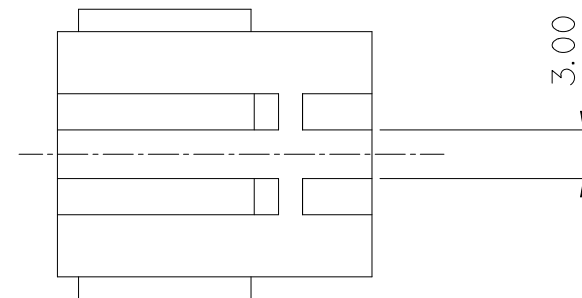
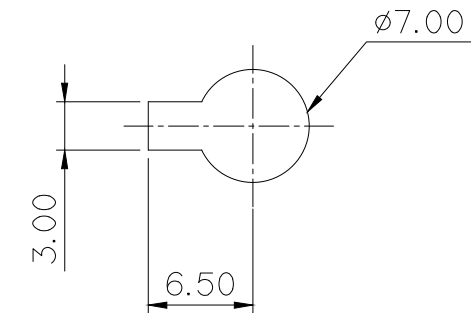
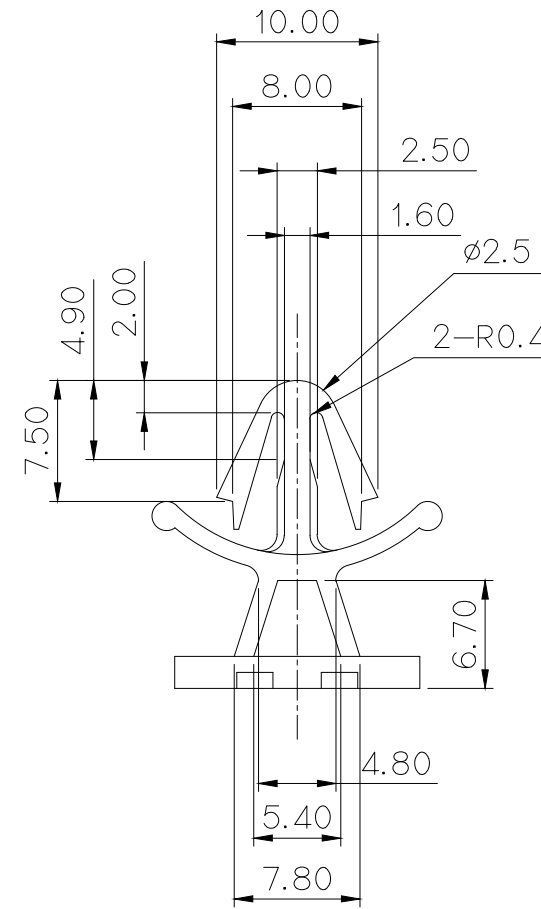
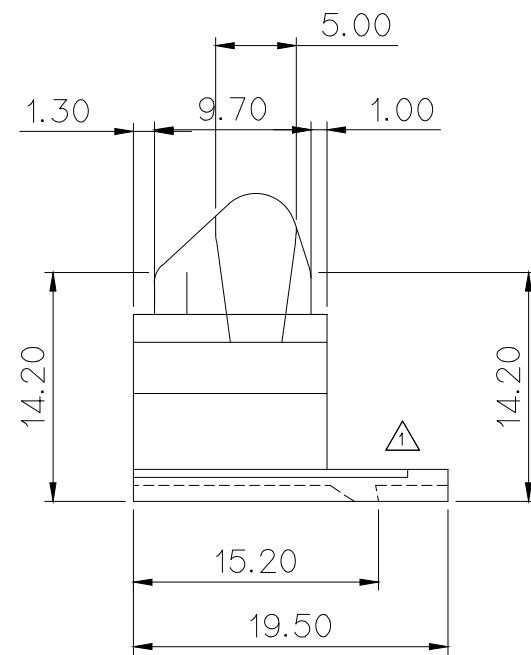
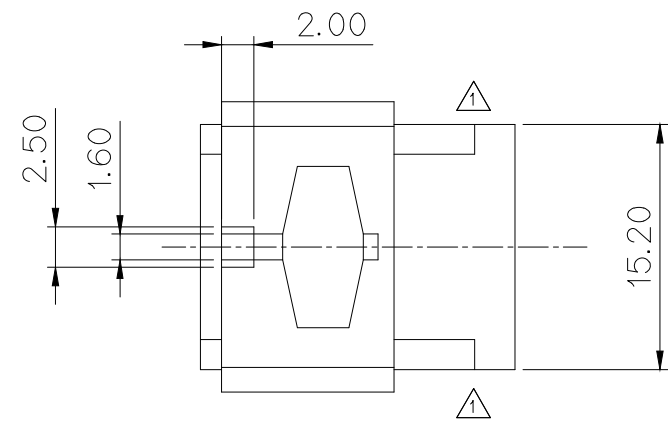
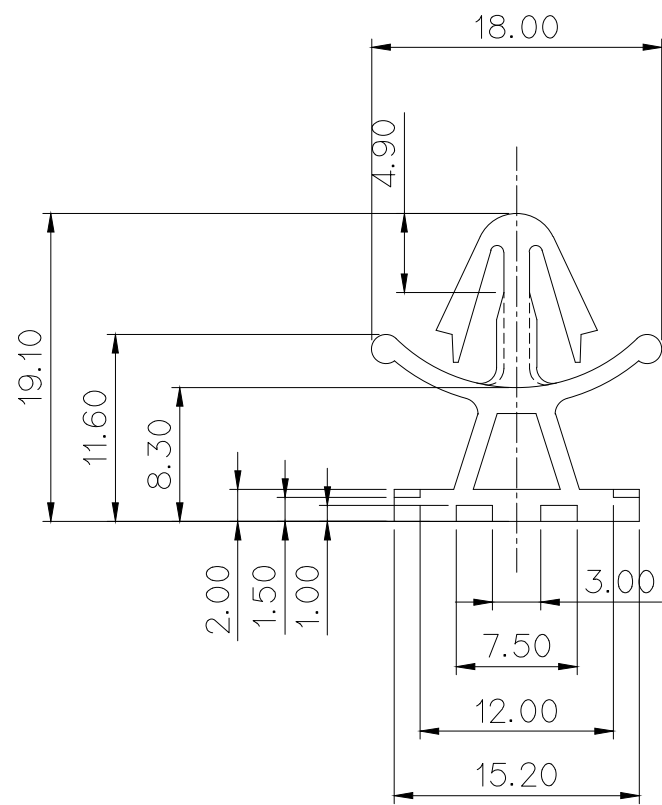


GENERAL TOLERANCE (HOUSING)					USED ON
10MAX	20MAX	45MAX	ANGLE	ECCENT	
±0.2	±0.25	±0.3	±30'	0.1	

주 기

1. 지시하지 않은 반경 R은 0.3로 한다
2. CLIP INSERTION FORCE: 10kgf 이하
3. CLIP RETENTION FORCE: 10kgf 이상
4. 적용 제품 P/NO: 110 W/P , 250 RUBBER Series
5. 제품내 함유된 6대 유해물질 (납, 수은, 카드뮴, 6가 크롬, PBBs, PBDEs)은 EU ELV 지침 및 RoHS 법규에서 지정한 최대 허용 농도를 초과해서는 안된다.



NOTE

1. UNLESS OTHERWISE SPECIFIED ALL RADIUS TO BE 0.3 RADIUS.
2. CLIP INSERTION FORCE : 10Kgf MAX
3. CLIP RETENTION FORCE : 10Kgf MIN
4. APPLICABLE PRODUCT : 110 W/P , 250 RUBBER Series
5. 6 HAZARDOUS SUBSTANCES IN PARTS (LEAD, MERCURY, CADMIUM, HEXAVALENT CHROMIUM, PBDEs) SHALL NOT EXCEED THE MAXIMUM PERMISSIBLE CONCENTRATION PRESCRIBED UNDER EU ELV DIRECTIVE.

APPROVED

2018-12-07

KOREA ELECTRIC
TERMINAL CO., LTD.
Korea Electric Terminal Co., LTD.

ISSUE MARK

				MATERIAL		SEE TABLE	KOREA ELECTRIC TERMINAL CO., LTD.
				FINISH		SEE TABLE	
				WIRE RANGE		CLASS	
				INSULATION		TYPE	
형상 및 품명변경(오일실 방지)	JIN			93.06.26			
LTR	REVISION RECORD	DR.	CHK.	APP.	DATE	TOLERANCE EXCEPT AS NOTED	SCALE 2/1
DR.	RHO. 92.04.21	CHK.			4.25	PART NAME	
CHK.		APP.			4.25	.250 RUBBER CLIP	
						PART NO. MG630521	