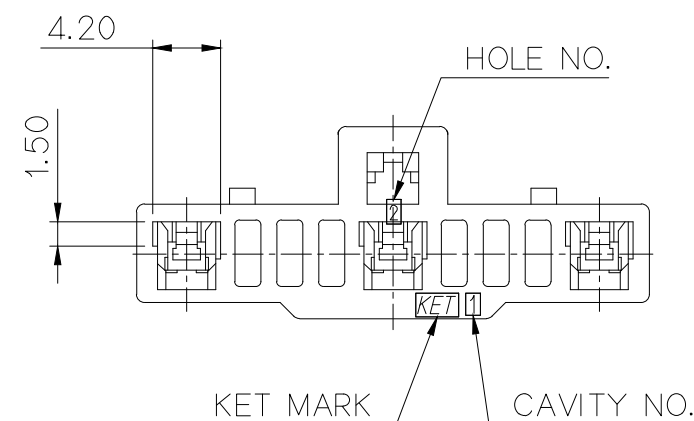
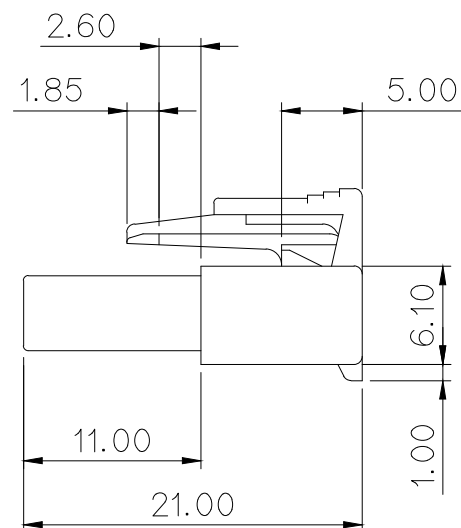
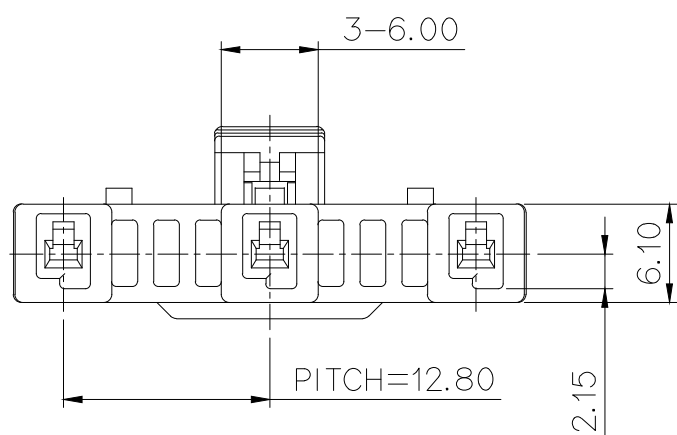
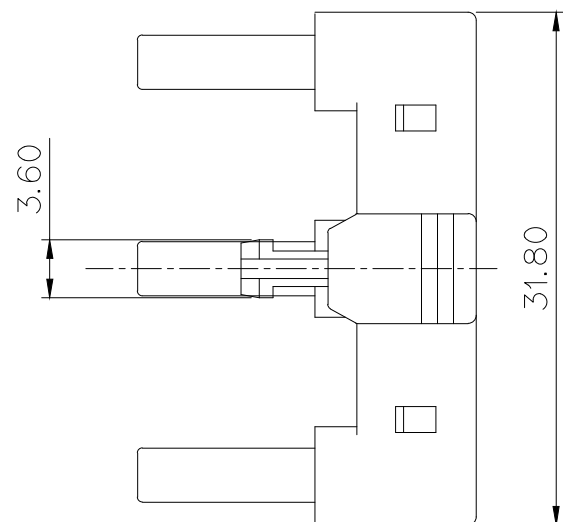


GENERAL TOLERANCE (HOUSING)					USED ON
10MAX	50MAX	100MAX	100VR	()	
±0.25	±0.35	±0.55	±0.95	±1.0	



주 기

1. 기능상 유해한 BURR, WELDLINE이 없을 것
2. 적용 TERMINAL : ST731307-3/324-3
적용 R/HOLDER: MG633861-1
3. 제품내 함유된 6대 유해물질 (납,수은,카드뮴,6가크롬, PBBs,PBDEs)은 EU ELV 지침 및 RoHS 법규에서 지정한 최대 허용 농도를 초과해서는 안된다.

NOTE

1. MUST BE FREE OF BURR, WELDLINE AND IMPERFECTION THAT AFFECT FUNCTION.
2. APPLICABLE TERMINAL : ST731307-3/324-3
APPLICABLE R/HOLDER: MG633861-1
3. 6 HAZARDOUS SUBSTANCES IN PARTS (LEAD, MERCURY, CADMIUM, HEXAVALENT CHROMIUM, PBBs, PBDEs) SHALL NOT EXCEED THE MAXIMUM PERMISSIBLE CONCENTRATION PRESCRIBED UNDER EU ELV DIRECTIVE & RoHS REGULATION.

PART NO.*표시는 색상 표기 임.

NO.	COLOR
* 0	NATURAL
1	RED
2	BLUE
3	YELLOW
5	BLACK
6	GREEN

△	ECO-1711-249 근거 도면 제작성	LCM	KSH	BUC	'17.11.16
LTR	REVISION RECORD	DR.	CHK.	APP.	DATE
	DR. LCM '17.11.13		CHK. PSH '17.11.13		
	CHK. KSH '17.11.13		APP. BUC '17.11.13		

MATERIAL	PET+PC(G.W.I.T)	KET KOREA ELECTRIC ENGINEERED TERMINAL CO., LTD.
FINISH	SEE TABLE	
WIRE RANGE	CLASS	060
INSULATION	TYPE	
TOLERANCE EXCEPT AS NOTED	SCALE	PART NO.
SEE TABLE	2/1	MG613212T-*03
PART NAME		060 3P PLUG HOUSING(삼성세탁기)

APPROVED

2019-11-06

KOREA ELECTRIC
TERMINAL CO., LTD.
Electronic Product Development Team

ISSUE MARK