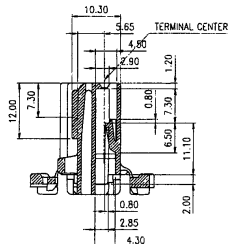
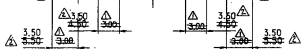
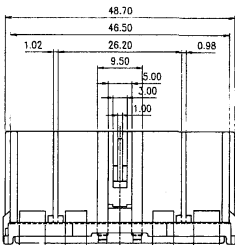
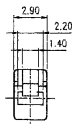
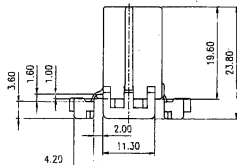
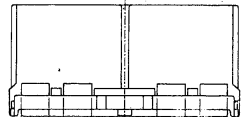


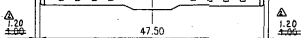
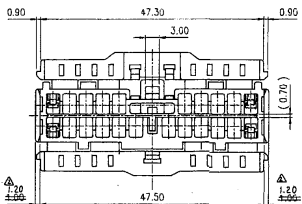
A



SEC. A-A



DETAIL CAVITY (5/1)



주 기

1. 치사하지 않은 R은 0.5 받.
2. 직용 TERMINAL-ST 730497, ST 740498
3. 하대 HOUSING P/NO: MG 620416
4. CONNT ASSY 삽입력: 14kgf 이하
5. 단자 고착력 (LANCE 관력: 6 kgf 이상), (총합: 10kgf 이상)
6. HINGE 부에 BURR, 이물질, 손상, WELD LINE 등의 결함이 없도록
- HINGE 또는 10A 이상 단자급형시 CRACK 발생이 없도록
7. (시험온도: -10°C)

CUSTOMER DRAWING

NO MATERIAL		PBT		KOREA ELECTRIC	
SERIAL PART NO.		AMT/04(14)		TERMINAL CO. LTD	
DESIGNER		DATE		REV. CLASS	
CHK		DATE		REV. TYPE	
LTH		DATE		REV. NO.	
DR. SIK 92.12.30		DE		MG 610415	
CHK		APP		SPL. CONNECTOR 222 PLUG HOUSING	