

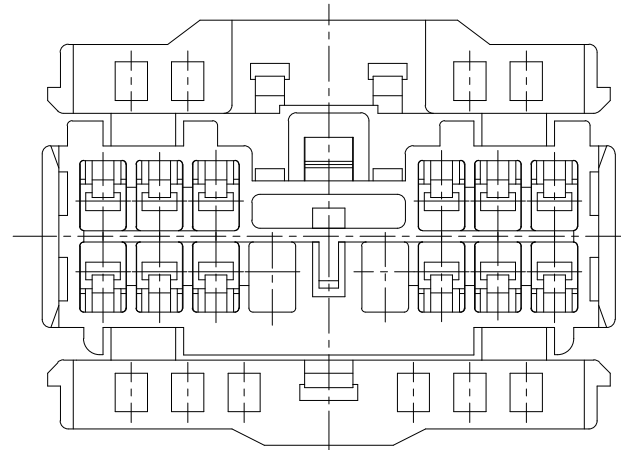
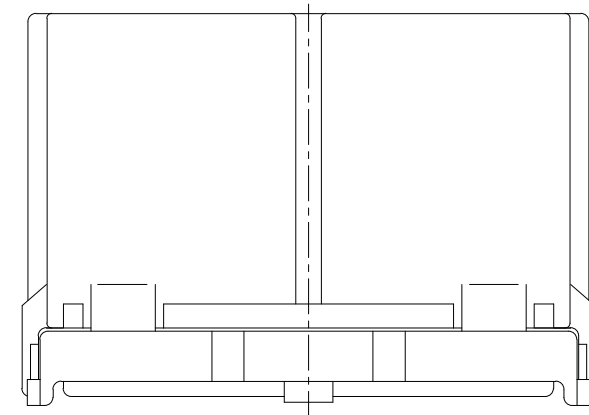
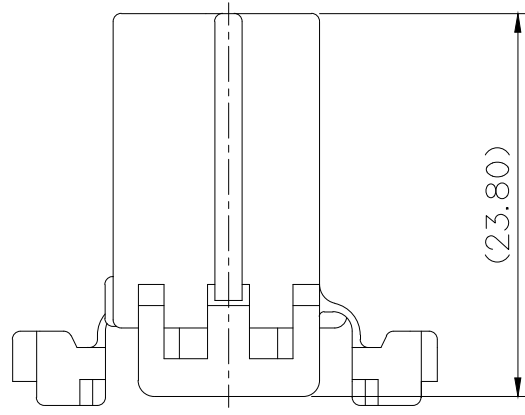
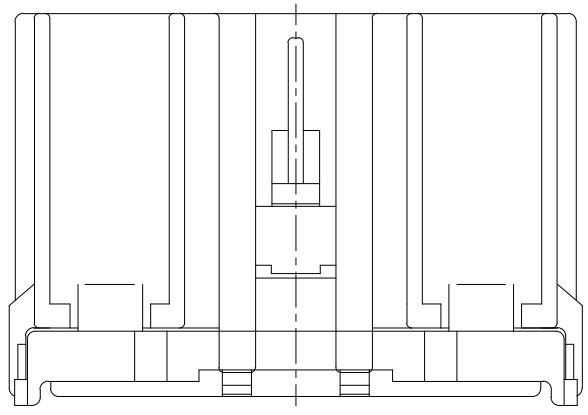
NO.	MATERIAL	COLOR
* 0	P B T	NATURAL
1		RED
2		BLUE
20		JADE
3		YELLOW
4		GRAY
40		DARK GRAY
41		LIGHT GRAY
* 5		BLACK
6		DARK GREEN
7		BROWN
8	LIGHT GREEN	
9	MAGENTA	
11	ORANGE	

주 기

- 기능상 유해한 BURR 및 변형 등이 없을 것.
- 적용 MALE CONNECTOR : MG620407
적용 TERMINAL : ST730497, ST730498, △ST731417
- 힌지에 WELDLINE 없을 것.
- KET 문자 : 凸TYPE, TAPER 15°
CAVITY NO. : 凸TYPE, TAPER 15°
- △5. 제품내 함유된 6대 유해물질 (납, 수은, 카드뮴, 6가크롬, PBBs, PBDEs)은 EU ELV 지침 및 RoHS 법규에서 지정한 최대 허용 농도를 초과해서는 안된다.

△NOTE

- MUST BE FREE OF BURR AND IMPERFECTION THAT AFFECT FUNCTION.
- APPLICABLE MALE CONNECTOR : MG620407
APPLICABLE TERMINAL : ST730497, ST730498, △ST731417
- MUST BE FREE OF WELDLINE IN THE HINGE.
- KET MARK : 凸TYPE, TAPER 15°
CAVITY NO. : 凸TYPE, TAPER 15°
- 6 HAZARDOUS SUBSTANCES IN PARTS (LEAD, MERCURY, CADMIUM, HEXAVALENT CHROMIUM, PBBs, PBDEs) SHALL NOT EXCEED THE MAXIMUM PERMISSIBLE CONCENTRATION PRESCRIBED UNDER EU ELV DIRECTIVE & RoHS REGULATION.



APPROVED
2021-11-03
KOREA ELECTRIC
TERMINAL CO., LTD.
Korea Electric Te
rminal Co., LTD.

ISSUE MARK

		MATERIAL		SEE TABLE		KOREA ELECTRIC TERMINAL CO., LTD.			
		FINISH		SEE TABLE		KOREA ELECTRIC TERMINAL CO., LTD.			
△2	ECO-2109-217 근거 도면 재작성	SDI	KSC	HYJ	'21.09.28	WIRE RANGE	-	CLASS	-
△1	ECO-1605-335 근거 도면 재작성	KCS	-		'16.06.07	INSULATION	-	TYPE	7123-8346
LTR	REVISION RECORD	DR.	CHK.	APP.	DATE	TOLERANCE EXCEPT AS NOTED	±0.2	SCALE	2/1
DR.	JWK	'92.11.01	CHK.	JJH	'92.11.01	PART NO.	MG610406		
CHK.	JWK	'92.11.01	APP.	WATANABE '92.11.01		PART NAME	SDL 14F HOUSING		