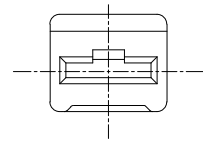
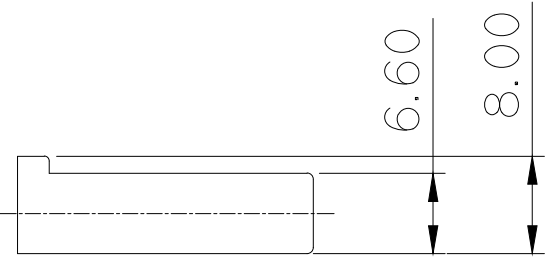
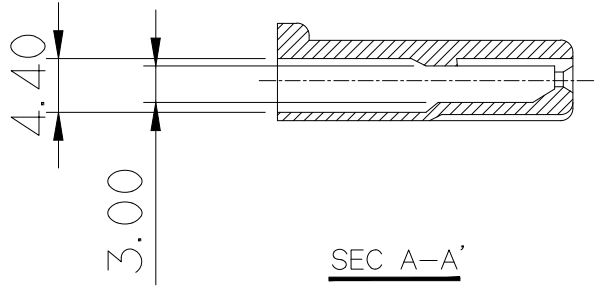
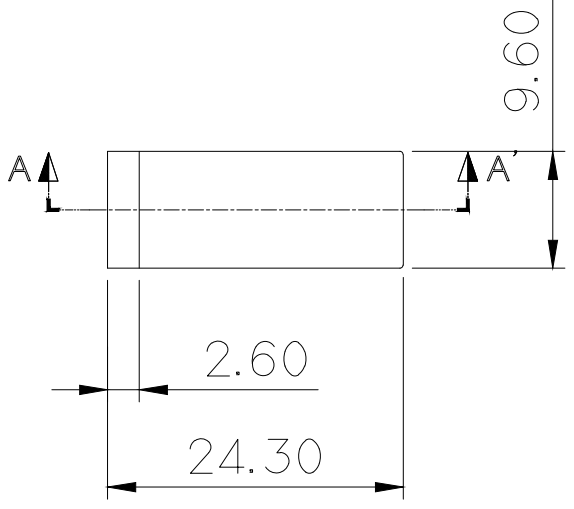


GENERAL TOLERANCE (HOUSING)

USED ON

10MAX	30MAX	50MAX	70MAX	100MAX	120MAX	250MAX	250VR	ANGLE
±0.15	±0.20	±0.30	±0.40	±0.50	±0.75	±0.9	±1.4	±30'



NOTE

- MUST BE FREE OF BURR, WELDLINE AND IMPERFECTION THAT AFFECT FUNCTION.
- 6 HAZARDOUS SUBSTANCES IN PARTS (LEAD, MERCURY, CADMIUM, HEXAVALENT CHROMIUM, PBDEs) SHALL NOT EXCEED THE MAXIMUM PERMISSIBLE CONCENTRATION PRESCRIBED UNDER EU ELV DIRECTIVE.

주 기

- 기능상 유해한 BURR 및 WELDLINE 등이 없을것.
- 제품내 함유된 6대 유해물질 (납, 수은, 카드뮴, 6가 크롬, PBBs, PBDEs)은 EU ELV 지침 및 RoHS 법규에서 지정한 최대 허용 농도를 초과해서는 안된다.

APPROVED

2018-12-10

**KOREA ELECTRIC
TERMINAL CO., LTD.
Korea Electric Te
rminal Co., LTD.**

ISSUE MARK

DIMENSIONS IN MM

					MATERIAL	NYLON	 KOREA ELECTRIC TERMINAL CO., LTD.
					FINISH	NATUREAL	
					WIRE RANGE	CLASS	
					INSULATION	TYPE NIF - 250	
LTR	REVISION RECORD	DR. CHK.	APP.	DATE	TOLERANCE EXCEPT AS NOTED	SCALE 1/1	PART NO. MG610086
	DR.	CHK.			PART NAME		
	CHK. JWK	APP. Watanabe			.250 PLUG HOUSING 1P		