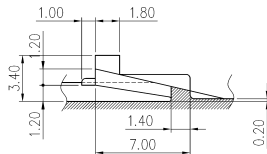
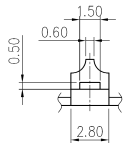
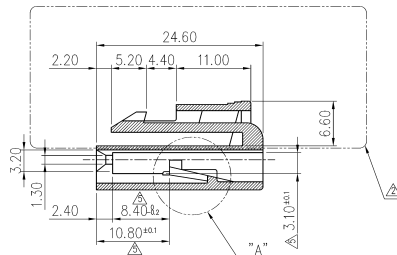
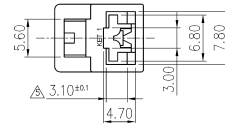
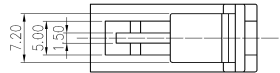
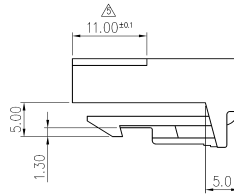
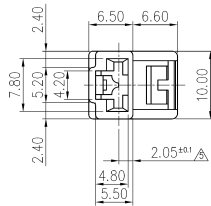


GENERAL TOLERANCE (HOUSING)							USED ON
10MAX	50MAX	100MAX	250MAX	250VR	ANGLE	ECCENT	
±0.2	±0.3	±0.55	±0.95	±1.4	±30'	0.1	



NO.	MATERIAL	COLOR
0	NATURAL	NATURAL
1	NYLON66:	RED
2		BLUE
3		YELLOW
4		GRAY
5		BLACK
6		W/GREEN
7		BROWN
8		GREEN

△	PART NO.	MATERIAL
	MG610041	NYLON66(V-2)
	MG611933	NYLON66(V-0)



△	고객 요청에 의한 치수 추가	SK	90.11.09	MATERIAL	SEE TABLE	KET KOREA ELECTRIC TERMINAL CO., LTD.	
△	시방변경 980221에 의거	KO	98.10.23	FINISH	SEE TABLE		
△	치수변경 (현품기준)	SK	91.06.11	WIRE RANGE		CLASS	
△	형상변경(HS'G LOCK부)	SK	90.07.05	INSULATION		TYPE	
△	형상변경 (인구면취)	SK	90.02.19			PART NO.	
LTR	REVISION RECORD	DR	CHK	APP.	DATE	SCALE	2/1
DR	관 85.12.30	CHK				PART NAME	250 1P PLUG HS'G
CHK	W	APP.					

DETAIL "A" (4/1)