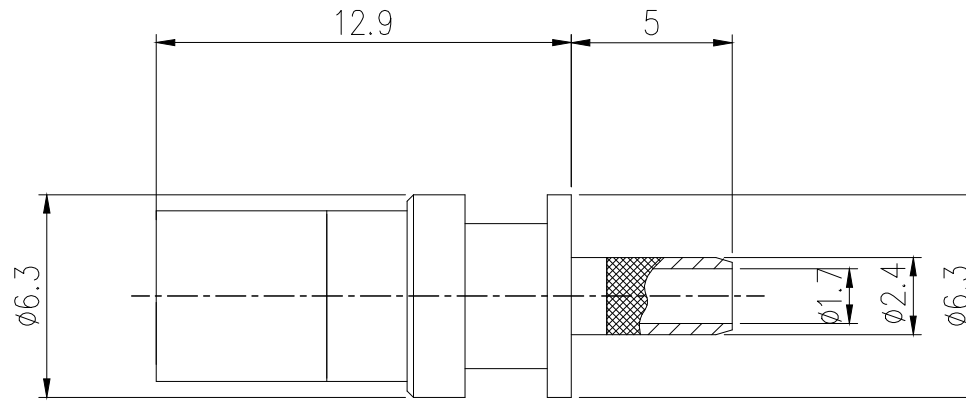
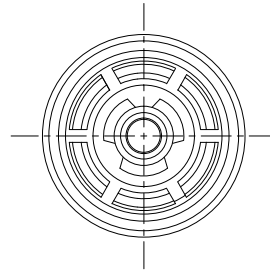


ISOMETRIC VIEW



GENERAL TOLERANCE (TERMINAL)					USED ON
10MAX	20MAX	45MAX	ANGLE	ECCENT	
±0.2	±0.25	±0.3	±30'	0.1	

주 기

- 기능상 유해한 흠, 변형 및 BURR가 없을 것.
- HKMC ES 91500-00, ES 96200-03 SPEC 에 준할 것.
- MS 301-08 중금속 관련 SPEC 에 준할 것.
- 적용부품: KR20301-20 [JACK TM'L], AU PLATE KR00401-20 [HARNES SLEEVE] or KR00404 [GUIDE SLEEVE]

"6 hazardous substances in parts (Lead, Mercury, Cadmium, Hexavalent Chromium, PBBs, PBDEs) shall not exceed the maximum permissible concentration prescribed under EU ELV Directive & RoHS Regulation."



3	GUIDE COVER	BRASS	-	Ni	1	
2	SHELL	BRASS	-	Ni	1	
1	IN HOUSING	PBT	NATURAL	-	1	
No.	Part Name	Material	Color	Finish	Q'ty	Remark
				MATERIAL		
				FINISH	SEE NOTE	
				WIRE RANGE		
				INSULATION		
△	RELEASE	pjm	khc	smk	15.09.24	
LTR	REVISION RECORD	DR.	CHK.	APP.	DATE	TOLERANCE EXCEPT AS NOTED
	DR. P.J.M 15.09.24		CHK. K.H.C 15.09.24			SCALE 4:1
	CHK. //		APP. S/M/K 15.09.24			PART NO. KR20202-20

ISSUE MARK
<b>KET</b> KOREA ELECTRIC TERMINAL CO., LTD. ENGINEERED
CLASS RF CONN"
TYPE W TO B (W)
PART NAME FAKRA STRAIGHT JACK OUTER CONTACT (HY)