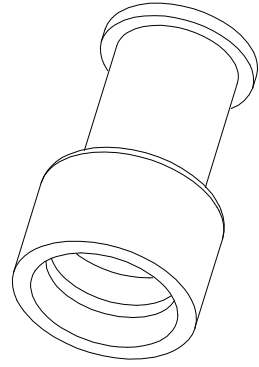
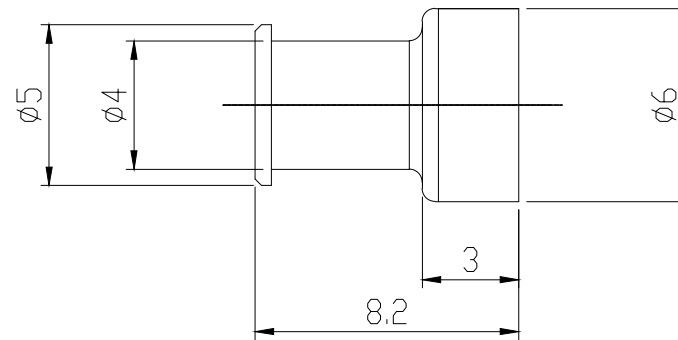
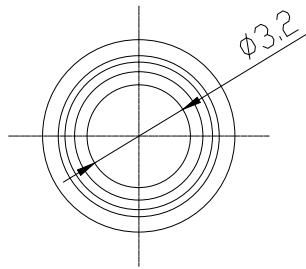
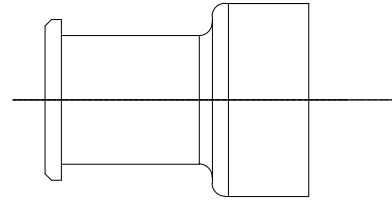


GENERAL TOLERANCE (TERMINAL)					USED ON
10MAX	20MAX	45MAX	ANGLE	ECCENT	
±0.2	±0.25	±0.3	±30'	0.1	



ISOMETRIC VIEW



주 기

1. 기능상 유해한 흠, 변형 및 BURR가 없을 것.
2. HKMC ES 91500-00 SPEC 에 준할 것.
3. MS 201-02 SPEC 에 준할 것.

**APPROVED**  
**2020-12-09**  
**KOREA ELECTRIC**  
**TERMINAL CO., LTD.**  
**Automotive IT Pro**  
**duct Development Team**

ISSUE MARK

		MATERIAL		BRASS		<b>KET</b> ENGINEERED	KOREA ELECTRIC					
		FINISH		NIP			TERMINAL CO., LTD.					
		WIRE RANGE		//			CLASS					
		INSULATION		//		RF CONN"						
△	RELEASE	pjm	khc	smk	14.09.11	TOLERANCE EXCEPT AS NOTED		±0.2	SCALE	4:1	TYPE	W TO B (W)
LTR	REVISION RECORD	DR.	CHK.	APP.	DATE	PART NO.		KR00403-20		PART NAME		
	DR. P.J.M 14.09.11	CHK. K.H.C 14.09.11							WP FAKRA SLEEVE (HY) (ø3.0)			
	CHK. //	APP. S.M.K 14.09.11										