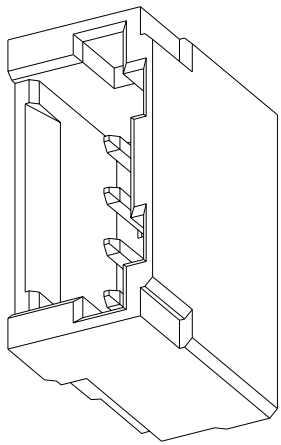
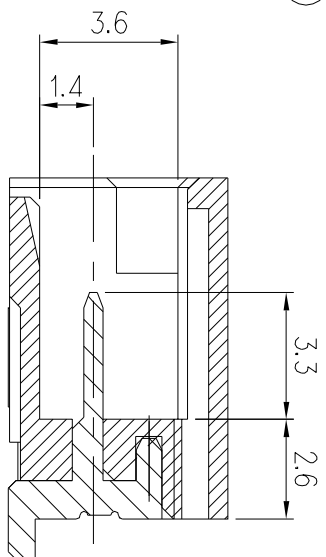
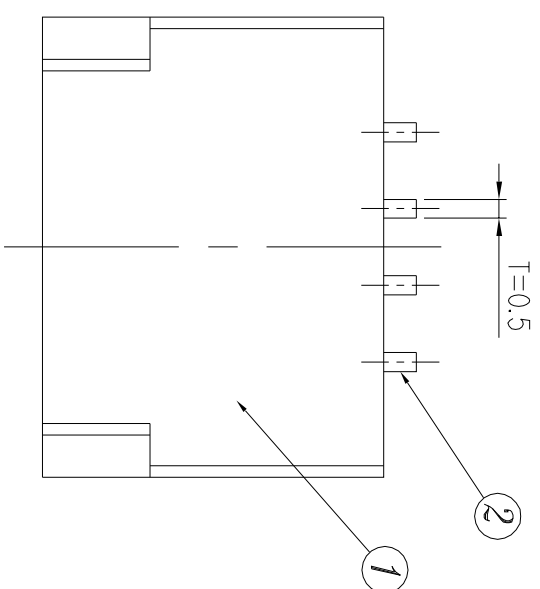


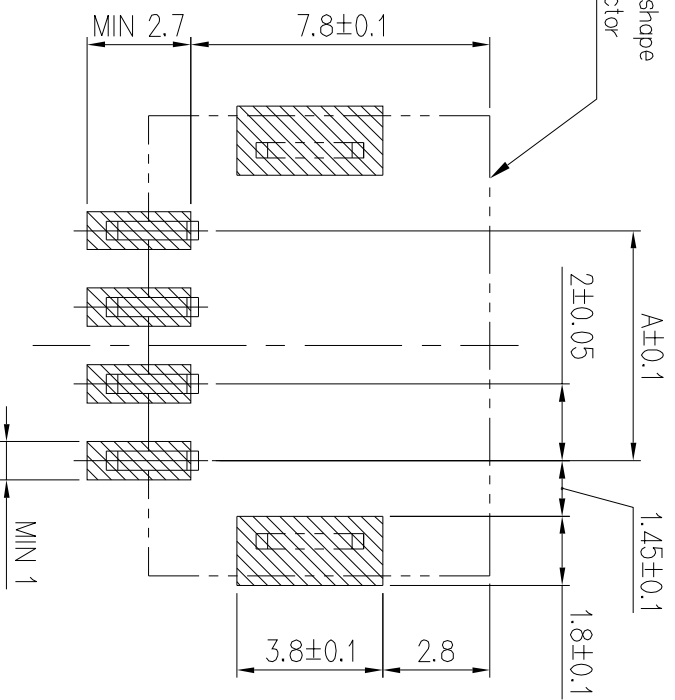
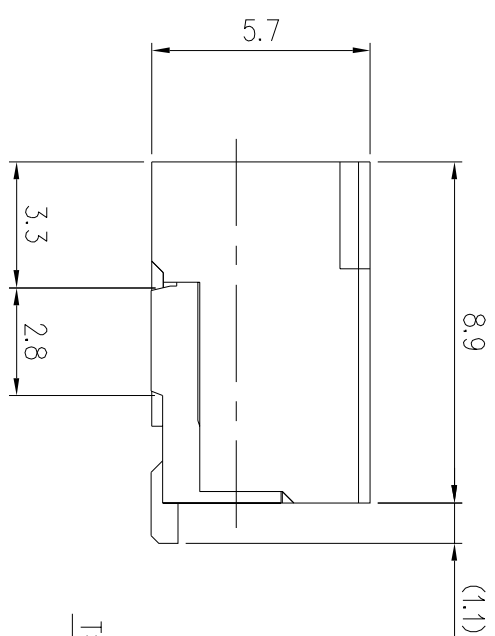
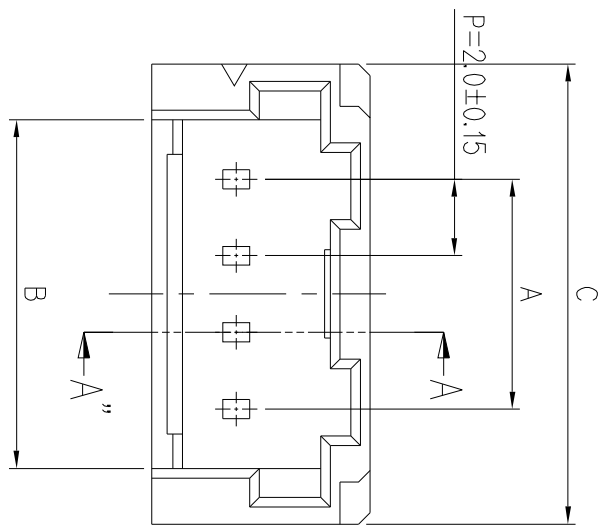
GENERAL TOLERANCE (HOUSING)					USED ON
10MAX	50MAX	100MAX	250MAX	250VR	ANGLE
±0.2	±0.3	±0.55	±0.95	±1.4	±30'
					0.1



ISOMETRIC VIEW

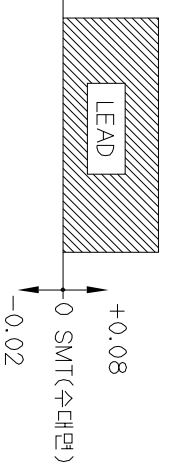


Section A-A  
(Scale 5:1)



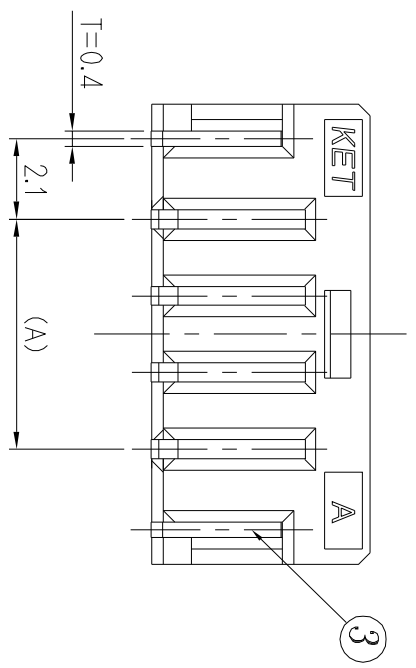
주 기

1. 기능상 유해한 BURR 및 WELDLINE 등이 없을 것.
2. 제품 내 함유된 6대 유해물질 (납, 수은, 카드뮴, 6가 크롬, PBBs, PBDEs)은 EU ELV 지침 및 RoHS 법규에서 지정한 최대 허용 농도를 초과해서는 안된다.
3. LEAD 평탄도 관리 치수 (COPLANARITY OF SOLDER TAILS)



4. 포장용 : EMBOSS TAPE
5. AVAILABLE CIRCUITS

Recommendable P.C.B layout



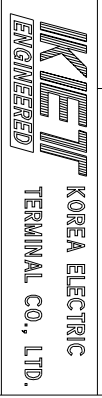
Circuits (N)	Dimensions			Part No.	Color	
	A	B	C		Normal(*)	Standard(**)
2	2.0	5.1	8.0	K500024-**-**	2 : Blue	02 : Natural
3	4.0	7.1	10.0	K500025-**-**	3 : Yellow	03 : Natural
4	6.0	9.1	12.0	K500026-**-**	5 : Black	04 : Natural
6	10.0	13.1	16.0	K500027-**-**		06 : Natural

6. 본 부품은 ES91500-03 형을 만족할 것.

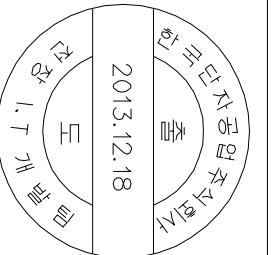
NOTE

1. MUST BE FREE OF BURR, WELDLINE AND IMPERFECTION THAT AFFECT FUNCTION.
2. HAZARDOUS SUBSTANCES IN PARTS (Lead, Mercury, Cadmium, Hexavalent Chromium, PBBs, PBDEs) SHALL NOT EXCEED THE MAXIMUM PERMISSIBLE CONCENTRATION PRESCRIBED UNDER EU ELV DIRECTIVE & ROHS REGULATION
3. PACKAGE : EMBOSS TAPE

No.	Part Name	Material	Color	Finish	Qty	Remark
3	METAL FITTING	COPPER ALLOY(T=0.4)	-	N+SP	2	
2	CONTACT	COPPER ALLOY(T=0.5)	-	N+SP	N	
1	HOUSING	NYLON	NATURAL	-	1	



ISSUE MARK



DR	CHK	DATE	DR	CHK	DATE	TOLERANCE AS NOTED	PART NO.
HC KWON	2012.03.14	2012.03.14	YJ JO	2012.03.14	2012.03.14	SEE TABLE	K5000**-**
CHK	WC BAEK	2012.03.14				SCALE 5/1	

PART NAME 2.0 Wire to Board WAFER ASSY